

APPENDIX A

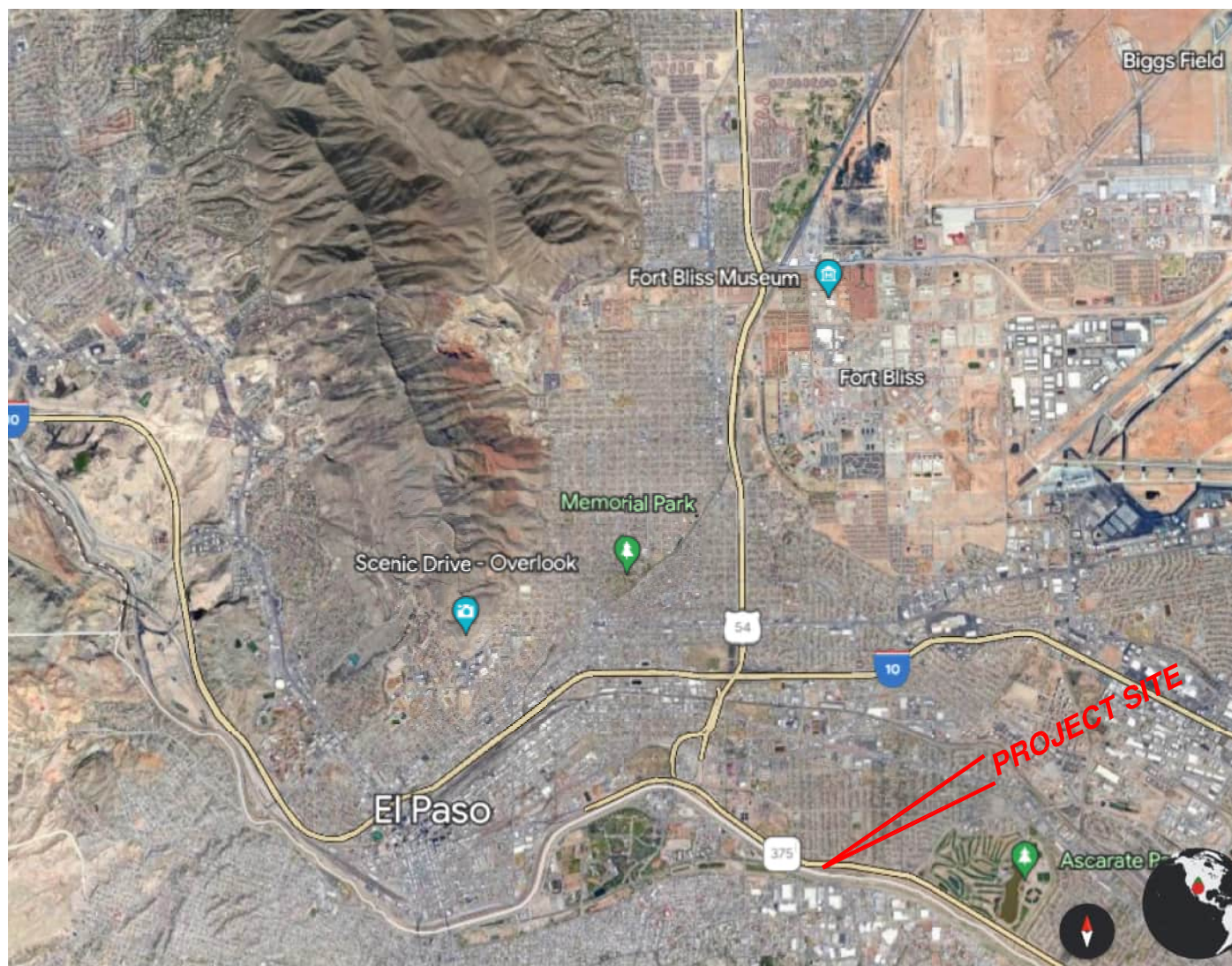
STANDARD MAPS

- A-1 – Site Location Map**
- A-2 – Site Plan Map/Project Footprint**
- A-3 – Geologic Map**
- A-4 – USGS Topographic Map**
- A-5 – Aerial Maps**
- A-6 – Flood Zones Map**
- A-7 – National Wetlands Inventory Map**

A-1 – Site Location Map



1:79428



Project No.

EPWU 23-13

Date: March 2024

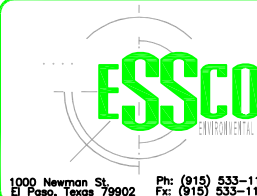
Scale: 1:79428

dwg by: ESSCO

designed by: ESSCO

**Clardy Fox Pump Station
Environmental Assessment
El Paso, Texas**

Site Location Map



Sheet No.

A-1

A-2 – Site Plan Map/Project Footprint



1: 2976



SOURCE: GOOGLE EARTH IMAGE: August 2023

Project Site

Project No.

EPWU 23-13

Date: March 2024

Scale: 1:2976

dwg by: ESSCO

designed by: ESSCO

**Clardy Fox Pump Station
Environmental Assessment
El Paso, Texas**

Site Plan Map



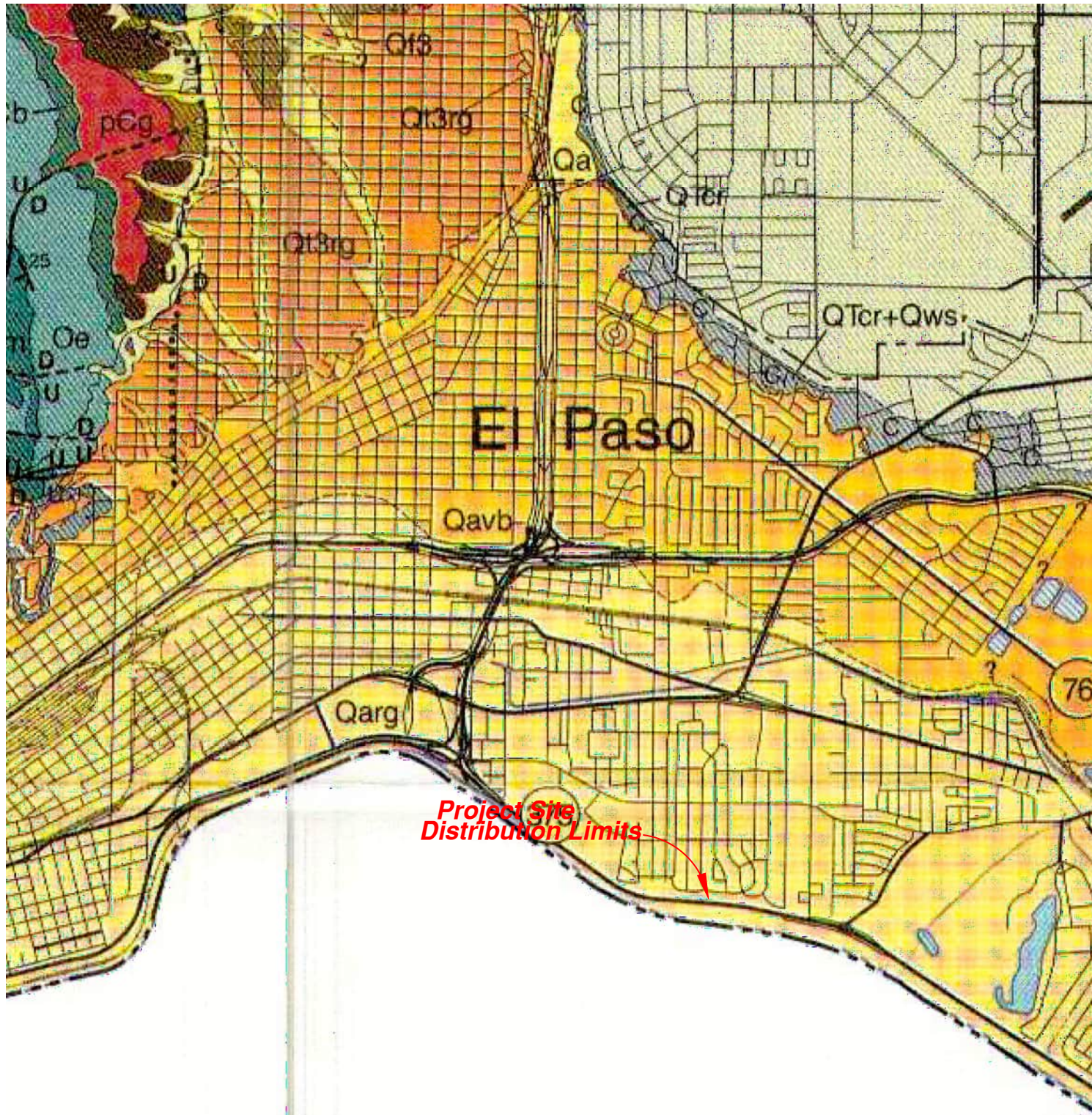
1000 Newman St.
El Paso, Texas 79902

Ph: (915) 533-1102
Fx: (915) 533-1103

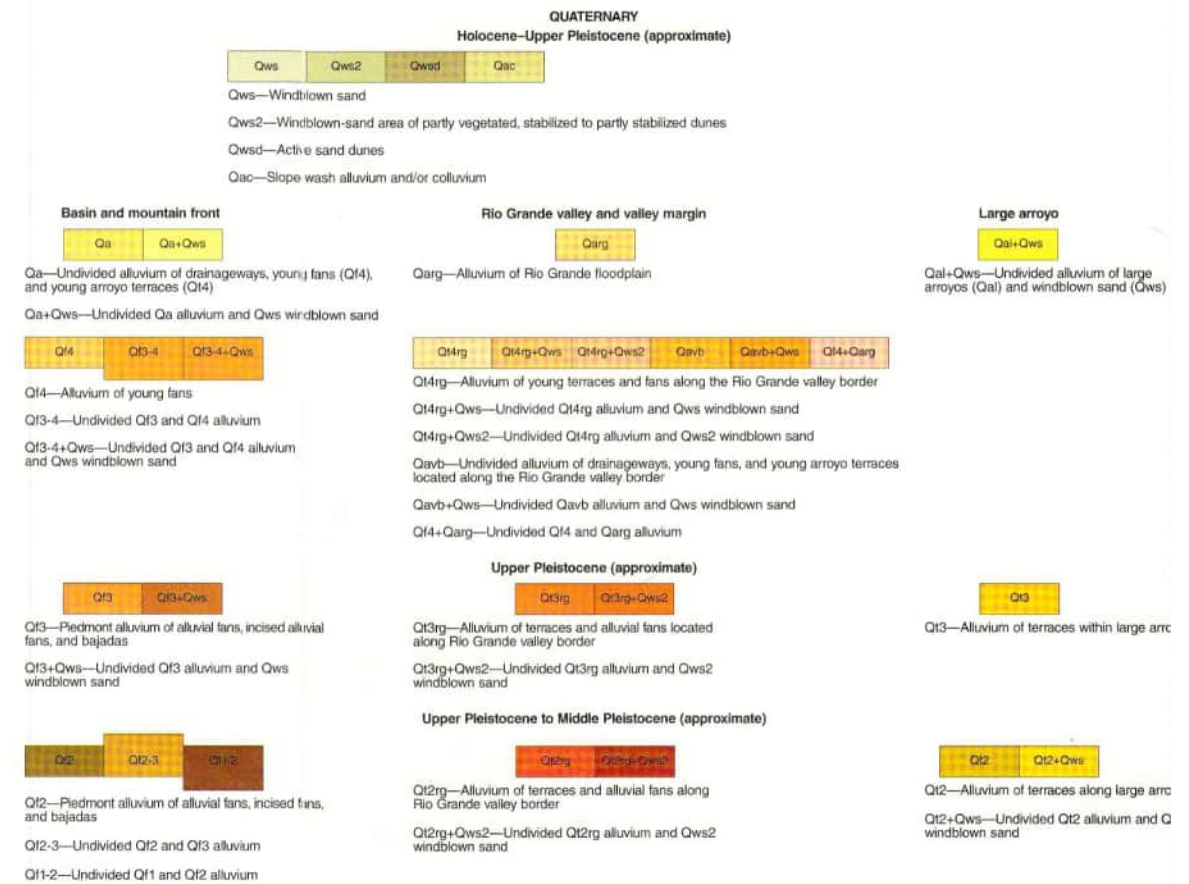
Sheet No.

A-2

A-3 – Geologic Map



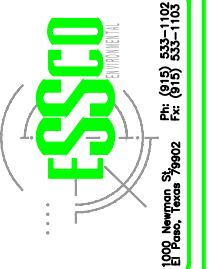
LEGEND



SCALE: 1: 41100

FIGURE IS FOR GRAPHICAL REPRESENTATION ONLY.

Project No.
EPWU-23-13
Date: July 2023
Scale: 1:41100
dwg by: ESSCO
designed by: ESSCO



Environmental Assessment
Clardy Fox Pump Station
El Paso, Texas
Geologic Map

REVISIONS

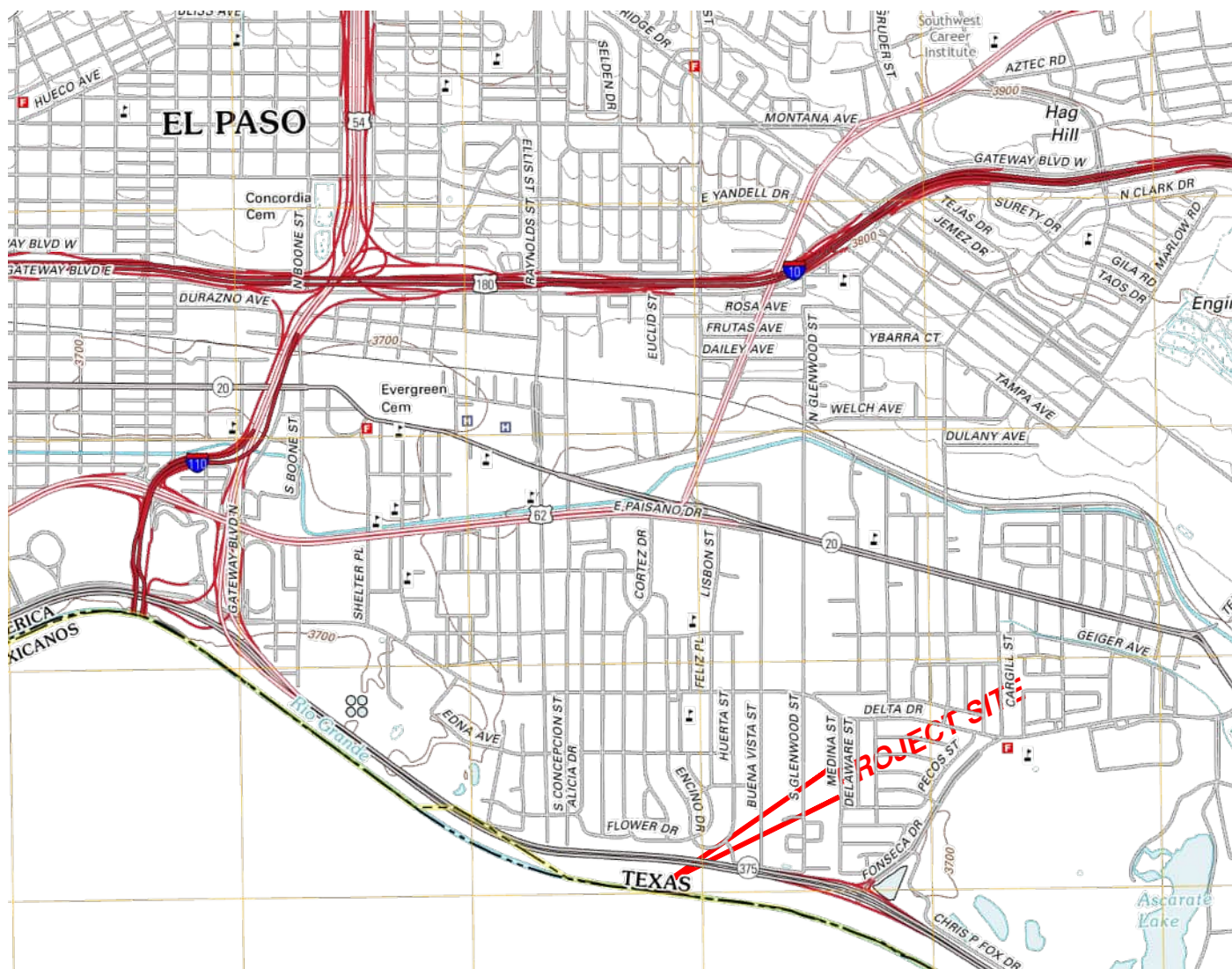
Sheet No.

A-3

A-4 – USGS Topographic Map



1:28800



SOURCE: USGS TOPO EL PASO 2012

Project No.

EPWU 23-13

Date: March 2024

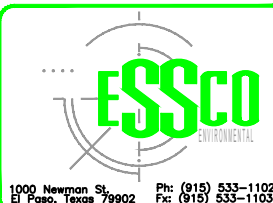
Scale: 1:28800

dwg by: ESSCO

designed by: ESSCO

**Clardy Fox Pump Station
Environmental Assessment
El Paso, Texas**

Topographic Map



Sheet No.

A-4

A-5 – Aerial Maps



1: 6300



SOURCE: BANKS DATABASE

 **Project Site**

Project No.

EPWU 23-13

Date: March 2024

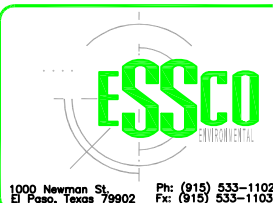
Scale: 1:6300

dwg by: ESSCO

designed by: ESSCO

**Clardy Fox Pump Station
EA
El Paso, Texas**

**Aerial Photograph
1936**



Sheet No.

1 OF 11



SOURCE: BANKS DATABASE

 **Project Site**

Project No.

EPWU 23-13

Date: March 2024

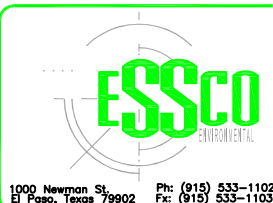
Scale: 1:6300

dwg by: ESSCO

designed by: ESSCO

**Clardy Fox Pump Station
EA
El Paso, Texas**

**Aerial Photograph
1946**



Sheet No.

2 OF 11



1: 6300



SOURCE: BANKS DATABASE

 **Project Site**

Project No.

EPWU 23-13

Date: March 2024

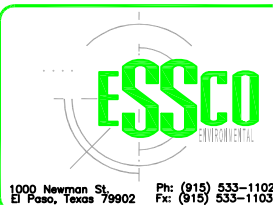
Scale: 1:6300

dwg by: ESSCO

designed by: ESSCO

**Clardy Fox Pump Station
EA
El Paso, Texas**

**Aerial Photograph
1956**

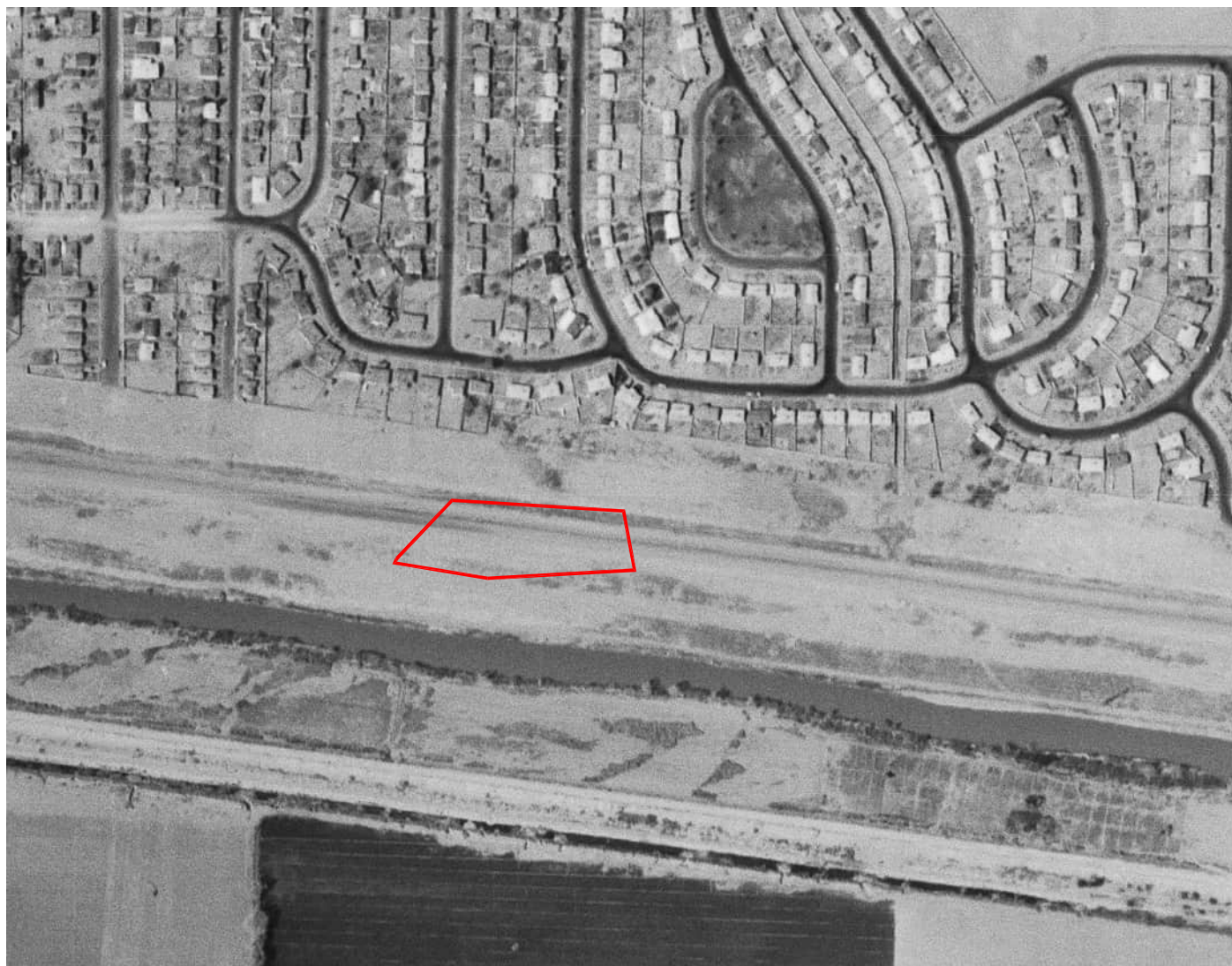


Sheet No.

3 OF 11



1: 6300



SOURCE: BANKS DATABASE

Project Site

Project No.

EPWU 23-13

Date: March 2024

Scale: 1:6300

dwg by: ESSCO

designed by: ESSCO

**Clardy Fox Pump Station
EA
El Paso, Texas**

**Aerial Photograph
1967**



Sheet No.

4 OF 11



1: 6300



SOURCE: BANKS DATABASE

Project Site

Project No.

EPWU 23-13

Date: March 2024

Scale: 1:6300

dwg by: ESSCO

designed by: ESSCO

**Clardy Fox Pump Station
EA
El Paso, Texas**

**Aerial Photograph
1974**



Sheet No.

5 OF 11



1: 6300



SOURCE: BANKS DATABASE

Project Site

Project No.

EPWU 23-13

Date: March 2024

Scale: 1:6300

dwg by: ESSCO

designed by: ESSCO

**Clardy Fox Pump Station
EA
El Paso, Texas**

**Aerial Photograph
1984**



Sheet No.

6 OF 11



SOURCE: BANKS DATABASE

 **Project Site**

Project No.

EPWU 23-13

Date: March 2024

Scale: 1:6300

dwg by: ESSCO

designed by: ESSCO

**Clardy Fox Pump Station
EA
El Paso, Texas**

**Aerial Photograph
1995**



Sheet No.

6 OF 11



1: 6300



SOURCE: BANKS DATABASE

Project Site

Project No.

EPWU 23-13

Date: March 2024

Scale: 1:6300

dwg by: ESSCO

designed by: ESSCO

**Clardy Fox Pump Station
EA
El Paso, Texas**

**Aerial Photograph
2004**



Sheet No.

8 OF 11



1: 6300



SOURCE: BANKS DATABASE

Project Site

Project No.

EPWU 23-13

Date: March 2024

Scale: 1:6300

dwg by: ESSCO

designed by: ESSCO

**Clardy Fox Pump Station
EA
El Paso, Texas**

**Aerial Photograph
2010**

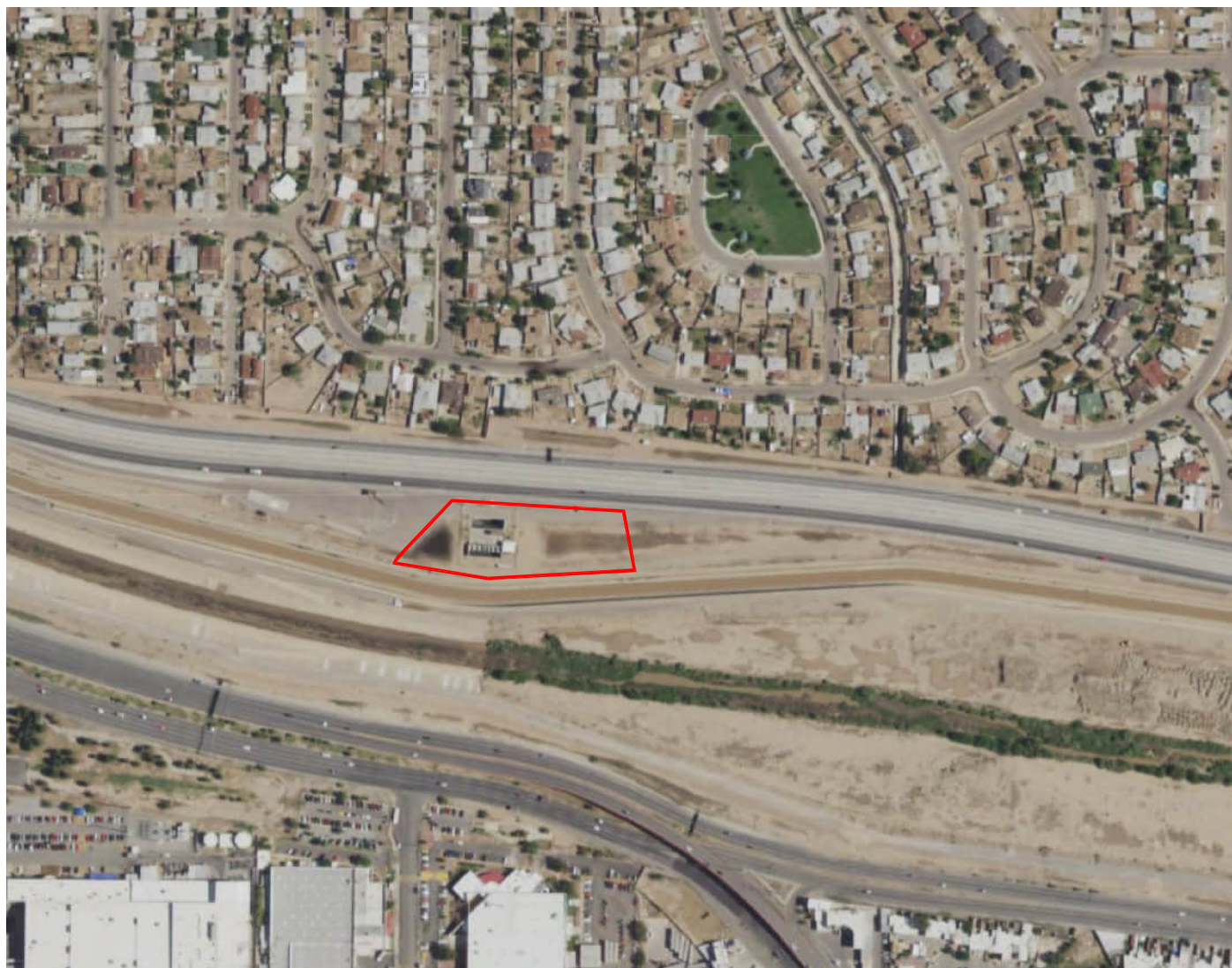


Sheet No.

9 OF 11



1: 6300



SOURCE: BANKS DATABASE

Project Site

Project No.

EPWU 23-13

Date: March 2024

Scale: 1:6300

dwg by: ESSCO

designed by: ESSCO

**Clardy Fox Pump Station
EA
El Paso, Texas**

**Aerial Photograph
2016**



1000 Newman St.
El Paso, Texas 79902

Ph: (915) 533-1102
Fx: (915) 533-1103

Sheet No.

10 OF 11



1: 6300



SOURCE: BANKS DATABASE

Project Site

Project No.

EPWU 23-13

Date: March 2024

Scale: 1:6300

dwg by: ESSCO

designed by: ESSCO

**Clardy Fox Pump Station
EA
El Paso, Texas**

**Aerial Photograph
2022**



Sheet No.

11 OF 11

A-6 – Flood Zones Map

A-7 – National Wetlands Inventory Map

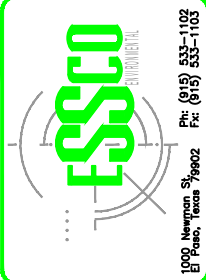


U.S. Fish and Wildlife Service
National Wetlands Inventory

Clardy Fox Pump Station



Project No.	EPWU 23-13
Date	March 12, 2024
Scale	1:3762
dwg by	ESSCO
designed by	ESSCO



Environmental Assessment
Clardy Fox Pump Station
El Paso, Texas
National Wetlands Map

Revisions

Sheet No.
A - 7



March 12, 2024

Wetlands

- | | | |
|--------------------------------|-----------------------------------|----------|
| Estuarine and Marine Deepwater | Freshwater Emergent Wetland | Lake |
| Estuarine and Marine Wetland | Freshwater Forested/Shrub Wetland | Other |
| | Freshwater Pond | Riverine |

This map is for general reference only. The US Fish and Wildlife Service is not responsible for the accuracy or currentness of the base data shown on this map. All wetlands related data should be used in accordance with the layer metadata found on the Wetlands Mapper web site.

National Wetlands Inventory (NWI)
This page was produced by the NWI mapper

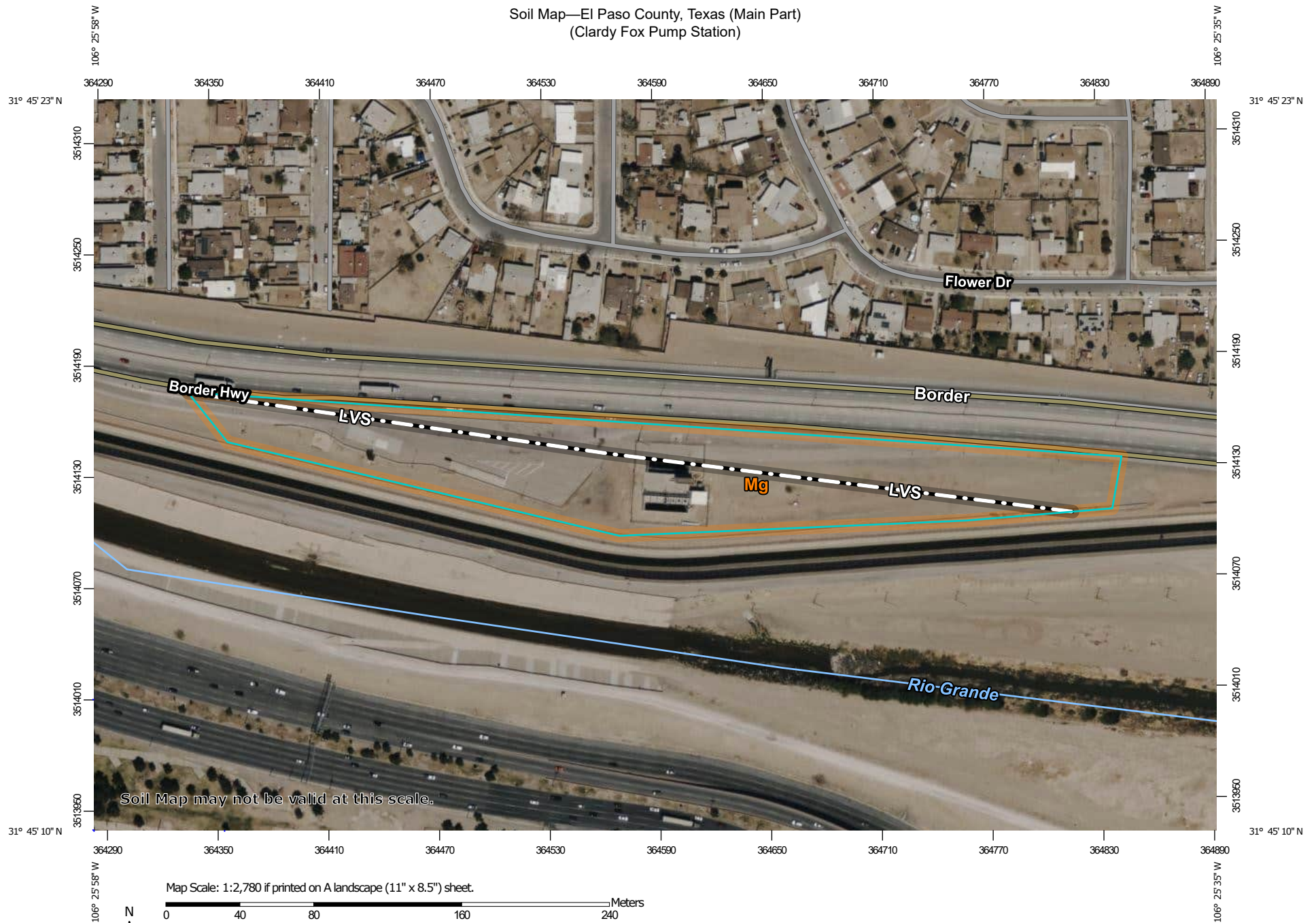
APPENDIX B

ENVIRONMENTAL SETTING AND IMPACTS ATTACHMENTS

- B-1 – NRCS Soil Survey & Prime and Important Farmland**
- B-2 – Photographic Documentation**
- B-3 – Cultural Resources**
- B-4 – U.S. Fish and Wildlife Service Information for Planning and
Consultation (IPaC) Report**
- B-5 – Biological Resources**
- B-6 – Banks Environmental Database**
- B-7 – Public Review**
- B-8 – Contacted Agencies**

B-1 – NRCS Soil Survey & Prime and Important Farmland

Soil Map—El Paso County, Texas (Main Part)
(Clardy Fox Pump Station)



Soil Map—El Paso County, Texas (Main Part)
(Clardy Fox Pump Station)

MAP LEGEND

Area of Interest (AOI)

 Area of Interest (AOI)

Soils

 Soil Map Unit Polygons

 Soil Map Unit Lines

 Soil Map Unit Points

Special Point Features



Blowout



Borrow Pit



Clay Spot



Closed Depression



Gravel Pit



Gravelly Spot



Landfill



Lava Flow



Marsh or swamp



Mine or Quarry



Miscellaneous Water



Perennial Water



Rock Outcrop



Saline Spot



Sandy Spot



Severely Eroded Spot



Sinkhole



Slide or Slip



Sodic Spot



Spoil Area



Stony Spot



Very Stony Spot



Wet Spot



Other



Special Line Features

Water Features



Streams and Canals

Transportation



Rails



Interstate Highways



US Routes



Major Roads



Local Roads

Background



Aerial Photography

MAP INFORMATION

The soil surveys that comprise your AOI were mapped at 1:31,700.

Warning: Soil Map may not be valid at this scale.

Enlargement of maps beyond the scale of mapping can cause misunderstanding of the detail of mapping and accuracy of soil line placement. The maps do not show the small areas of contrasting soils that could have been shown at a more detailed scale.

Please rely on the bar scale on each map sheet for map measurements.

Source of Map: Natural Resources Conservation Service

Web Soil Survey URL:

Coordinate System: Web Mercator (EPSG:3857)

Maps from the Web Soil Survey are based on the Web Mercator projection, which preserves direction and shape but distorts distance and area. A projection that preserves area, such as the Albers equal-area conic projection, should be used if more accurate calculations of distance or area are required.

This product is generated from the USDA-NRCS certified data as of the version date(s) listed below.

Soil Survey Area: El Paso County, Texas (Main Part)

Survey Area Data: Version 22, Sep 5, 2023

Soil map units are labeled (as space allows) for map scales 1:50,000 or larger.

Date(s) aerial images were photographed: Apr 3, 2021—Apr 4, 2021

The orthophoto or other base map on which the soil lines were compiled and digitized probably differs from the background imagery displayed on these maps. As a result, some minor shifting of map unit boundaries may be evident.

Map Unit Legend

Map Unit Symbol	Map Unit Name	Acres in AOI	Percent of AOI
Mg	Made land, gila soil material	5.4	100.0%
Totals for Area of Interest		5.4	100.0%

B-2 – Photographic Documentation

PHOTOGRAPHIC REPORTING DATA SHEET

Photograph No. 1



View showing staircase leading to lower portion of Project Site.

Photograph No. 2



View showing staircase leading to upper portion of Project Site.

PHOTOGRAPHIC REPORTING DATA SHEET

Photograph No. 3



View showing lower portion of Project Site with Border Highway beyond from the west.

Photograph No. 4



View showing western limits of Project Site.

PHOTOGRAPHIC REPORTING DATA SHEET

Photograph No. 5



View showing southern limits of Project Site.

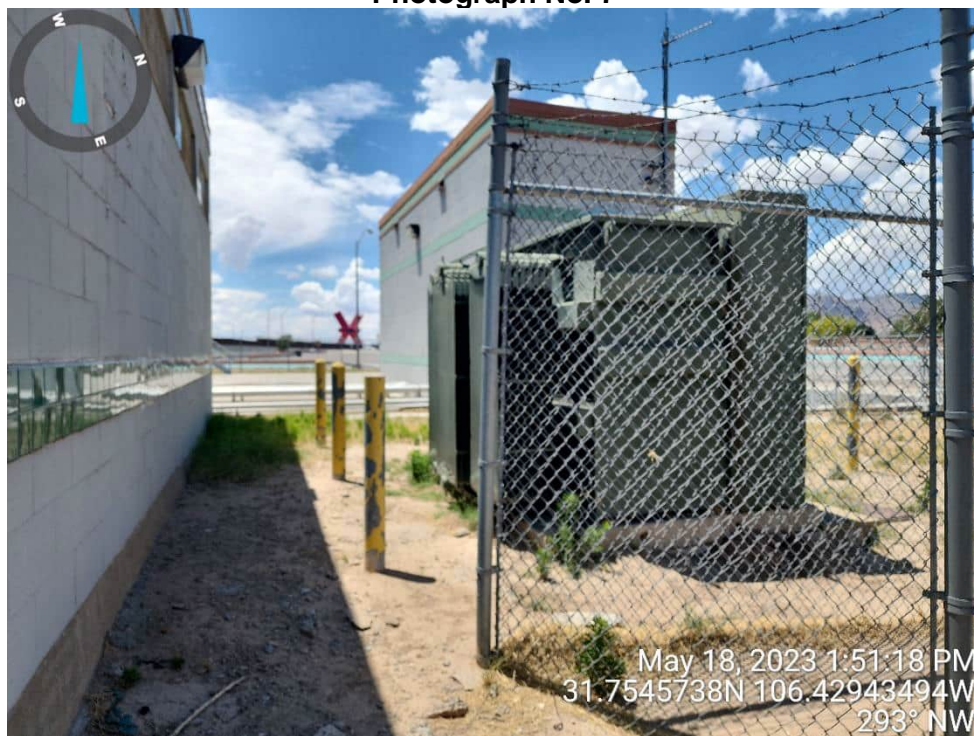
Photograph No. 6



View showing southeastern portion of Project Site.

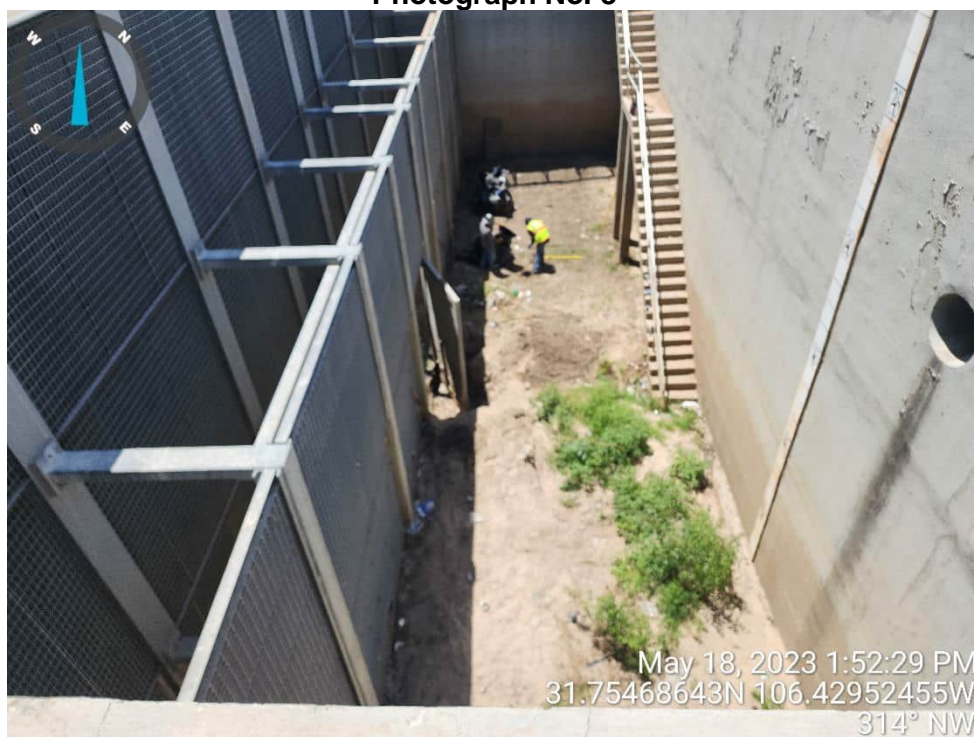
PHOTOGRAPHIC REPORTING DATA SHEET

Photograph No. 7



View showing eastern limits of Project Site.

Photograph No. 8



View looking into lower portion of Project Site from the east.

B-3 – Cultural Resources



Zakk Holguin <zholguin@esscogroup.org>

Clardy Fox Pump Station

2 messages

noreply@thc.state.tx.us <noreply@thc.state.tx.us>
To: zholguin@esscogroup.org, reviews@thc.state.tx.us

Fri, Apr 26, 2024 at 3:00 PM



Re: Project Review under Section 106 of the National Historic Preservation Act
THC Tracking #202407870

Date: 04/26/2024

Clardy Fox Pump Station

[TX Loop 375](#)

[El Paso, TX 79905](#)

Description: The project involves installing three pumps and associated controls and housing to the existing pump station.

Dear Zakk Holguin:

Thank you for your submittal regarding the above-referenced project. This response represents the comments of the State Historic Preservation Officer, the Executive Director of the Texas Historical Commission (THC), pursuant to review under Section 106 of the National Historic Preservation Act.

The review staff, led by Caitlin Brashear, Drew Sitters and Patrick Bassett, has completed its review and has made the following determinations based on the information submitted for review:

Above-Ground Resources

- Property/properties are eligible for listing or already listed in the National Register of Historic Places.
- No adverse effects on historic properties provided that the following conditions are met.

Archeology Comments

- No historic properties affected. However, if cultural materials are encountered during construction or disturbance activities, work should cease in the immediate area; work can continue where no cultural materials are present. Please contact the THC's Archeology Division at 512-463-6096 to consult on further actions that may be necessary to protect the cultural remains.

We have the following comments: The Texas Historical Commission Division of Architecture review staff, led by Patrick Bassett, has determined that there will be no adverse effect with the condition that ESSCO sends us copies of the design for this infrastructure or related improvements as they are created.

We look forward to further consultation with your office and hope to maintain a partnership that will foster effective historic preservation. Thank you for your cooperation in this review process, and for your efforts to preserve the irreplaceable heritage of Texas. If the project changes, or if new historic properties are found, please contact the review staff. If you have any questions concerning our review or if we can be of further assistance, please email the following reviewers: caitlin.brashear@thc.texas.gov, drew.sitters@thc.texas.gov, patrick.bassett@thc.texas.gov.

This response has been sent through the electronic THC review and compliance system (eTRAC). Submitting your project via eTRAC eliminates mailing delays and allows you to check the status of the review, receive an electronic response, and generate reports on your submissions. For more information, visit <http://thc.texas.gov/etrac-system>.

Sincerely,

A handwritten signature in black ink that reads "Patricia Bassett". The signature is written in a cursive style with a large initial "P" and a long, sweeping underline.

for Bradford Patterson
Chief Deputy State Historic Preservation Officer

Please do not respond to this email.

**B-4 – U.S. Fish and Wildlife Service Information for Planning and
Consultation (IPaC) Report**

Regulatory review

The IPaC regulatory review process helps you to evaluate the potential impacts of your project on resources managed by the U.S. Fish and Wildlife Service. It walks you through the regulations that cover each protected resource and offers suggestions and assistance in designing your project.



Endangered species

Endangered species are protected under the Endangered Species Act¹.



Migratory birds

Certain birds are protected under the Migratory Bird Treaty Act³ and the Bald and Golden Eagle Protection Act⁴.

10 migratory birds of conservation concern are expected to occur or may be affected by activities in this location.



Contact the local U.S. Fish and Wildlife Service field office

There is currently no regulatory review process in IPaC for migratory birds. Please contact the local U.S. Fish and Wildlife Service field office to evaluate effects and authorize take.



Coastal Barriers

Projects within the Coastal Barrier Resource System may be subject to regulation under the Coastal Barrier Resources Act¹¹, or other State/Federal statutes.

THERE ARE NO KNOWN COASTAL BARRIERS AT THIS LOCATION.



Facilities

U.S. Fish and Wildlife Service facilities are protected under the National Wildlife Refuge System Administration Act⁸ and the National Fish Hatchery System⁹.

THERE ARE NO U.S. FISH AND WILDLIFE SERVICE REFUGES OR FISH HATCHERIES AT THIS LOCATION.



Wetlands

Wetlands and other aquatic habitats may be subject to regulation under Section 404 of the Clean Water Act¹⁰, or other State/Federal statutes.

THIS LOCATION DID NOT INTERSECT ANY WETLANDS MAPPED BY NWI.

1. The Endangered Species Act (ESA) of 1973.
2. The Migratory Birds Treaty Act of 1918.
3. The Bald and Golden Eagle Protection Act of 1940.
4. NOAA Fisheries, also known as the National Marine Fisheries Service (NMFS), is an office of the National Oceanic and Atmospheric Administration within the Department of Commerce.
5. The National Wildlife Refuge System Administration Act of 1966.
6. The National Fish Hatchery System.
7. Section 404 of the Clean Water Act establishes a program to regulate the discharge of dredged and fill material into waters of the United States, including wetlands.
8. The Coastal Barrier Resources Act.

B-5 – Biological Resources

El Paso Water Clardy Fox Pump Station Project (TPWD #51684)

Richard Hanson <Richard.Hanson@tpwd.texas.gov>

Tue 3/5/2024 7:34 AM

To:ypereyra@esscogroup.org <ypereyra@esscogroup.org>

Hi Yvette,

Thank you for submitting the proposed Clardy Fox Pump Station project for review. Based on review of the documentation and description provided, the Environmental Review Team does not anticipate significant adverse impacts to rare, threatened, or endangered species, or other fish and wildlife resources. However, please note it is the responsibility of the project proponent to comply with all federal, state, and local laws that protect fish and wildlife. Provided the project plans do not change, TPWD considers coordination to be complete.

Rick Hanson
Environmental Review Biologist
Ecological & Environmental Planning Program
Texas Parks & Wildlife Department
(806) 761-4930 ext. 4936



Life's better outside.®

Last Update: 9/1/2023

EL PASO COUNTY

AMPHIBIANS

Woodhouse's toad *Anaxyrus woodhousii*

Terrestrial and aquatic: A wide variety of terrestrial habitats are used by this species, including forests, grasslands, and barrier island sand dunes. Aquatic habitats are equally varied.

Federal Status:	State Status:	SGCN: Y
Endemic: N	Global Rank: G5	State Rank: SU

BIRDS

chestnut-collared longspur *Calcarius ornatus*

Occurs in open shortgrass settings especially in patches with some bare ground. Also occurs in grain sorghum fields and Conservation Reserve Program lands

Federal Status:	State Status:	SGCN: Y
Endemic: N	Global Rank: G5	State Rank: S3

Franklin's gull *Leucophaeus pipixcan*

The county distribution for this species includes geographic areas that the species may use during migration. Time of year should be factored into evaluations to determine potential presence of this species in a specific county. This species is only a spring and fall migrant throughout Texas. It does not breed in or near Texas. Winter records are unusual consisting of one or a few individuals at a given site (especially along the Gulf coastline). During migration, these gulls fly during daylight hours but often come down to wetlands, lake shore, or islands to roost for the night.

Federal Status:	State Status:	SGCN: Y
Endemic: N	Global Rank: G5	State Rank: S2N

golden eagle *Aquila chrysaetos*

Habitat description is not available at this time.

Federal Status:	State Status:	SGCN: Y
Endemic: N	Global Rank: G5	State Rank: S3B

lark bunting *Calamospiza melanocorys*

Overall, it's a generalist in most short grassland settings including ones with some brushy component plus certain agricultural lands that include grain sorghum. Short grasses include sideoats and blue gramas, sand dropseed, prairie junegrass (Koeleria), buffalograss also with patches of bluestem and other mid-grass species. This bunting will frequent smaller patches of grasses or disturbed patches of grasses including rural yards. It also uses weedy fields surrounding playas. This species avoids urban areas and cotton fields.

Federal Status:	State Status:	SGCN: Y
Endemic: N	Global Rank: G5	State Rank: S4B

southwestern willow flycatcher *Empidonax traillii extimus*

Thickets of willow, cottonwood, mesquite, and other species along desert streams

Federal Status: LE	State Status: E	SGCN: N
Endemic: N	Global Rank: G5T2	State Rank: S1B

DISCLAIMER

The information on this web application is provided "as is" without warranty as to the currentness, completeness, or accuracy of any specific data. The data provided are for planning, assessment, and informational purposes. Refer to the Frequently Asked Questions (FAQs) on the application website for further information.

EL PASO COUNTY

BIRDS

Sprague's pipit

Anthus spragueii

The county distribution for this species includes geographic areas that the species may use during migration. Time of year should be factored into evaluations to determine potential presence of this species in a specific county. Habitat during migration and in winter consists of pastures and weedy fields (AOU 1983), including grasslands with dense herbaceous vegetation or grassy agricultural fields.

Federal Status:	State Status:	SGCN: Y
Endemic: N	Global Rank: G3G4	State Rank: S3N

western burrowing owl

Athene cunicularia hypugaea

Open grasslands, especially prairie, plains, and savanna, sometimes in open areas such as vacant lots near human habitation or airports; nests and roosts in abandoned burrows

Federal Status:	State Status:	SGCN: Y
Endemic: N	Global Rank: G4T4	State Rank: S2

western yellow-billed cuckoo

Coccyzus americanus occidentalis

Status applies only to western population beyond the Pecos River Drainage; breeds in riparian habitat and associated drainages; springs, developed wells, and earthen ponds supporting mesic vegetation; deciduous woodlands with cottonwoods and willows; dense understory foliage is important for nest site selection; nests in willow, mesquite, cottonwood, and hackberry; forages in similar riparian woodlands; breeding season mid-May-late Sept.

Federal Status: LT	State Status:	SGCN: Y
Endemic: N	Global Rank: G5T2T3	State Rank: S4S5B

white-faced ibis

Plegadis chihi

The county distribution for this species includes geographic areas that the species may use during migration. Time of year should be factored into evaluations to determine potential presence of this species in a specific county. Prefers freshwater marshes, sloughs, and irrigated rice fields, but will attend brackish and saltwater habitats; currently confined to near-coastal rookeries in so-called hog-wallow prairies. Nests in marshes, in low trees, on the ground in bulrushes or reeds, or on floating mats.

Federal Status:	State Status: T	SGCN: Y
Endemic: N	Global Rank: G5	State Rank: S4B

FISH

longnose dace

Rhinichthys cataractae

Can only be found in the Big Bend portion of the Rio Grande. Occasionally taken in lakes and clear pools of rivers but prefers clear, flowing water in gravelly riffles.

Federal Status:	State Status:	SGCN: Y
Endemic: N	Global Rank: G5	State Rank: S2

speckled chub

Macrhybopsis aestivalis

Found throughout the Rio Grande and lower Pecos River but occurs most frequently between the Río Conchos confluence and the Pecos River. Flowing water over coarse sand and fine gravel substrates in streams; typically found in raceways and runs.

Federal Status:	State Status: T	SGCN: Y
Endemic: N	Global Rank: G3G4	State Rank: S1S2

DISCLAIMER

The information on this web application is provided "as is" without warranty as to the currentness, completeness, or accuracy of any specific data. The data provided are for planning, assessment, and informational purposes. Refer to the Frequently Asked Questions (FAQs) on the application website for further information.

EL PASO COUNTY

INSECTS

American bumblebee *Bombus pensylvanicus*

Habitat description is not available at this time.

Federal Status:	State Status:	SGCN: Y
Endemic:	Global Rank: G3G4	State Rank: SNR

grande stripetail *Isoperla jewetti*

Originally described from El Paso Co., Texas from specimens collected in 1939.

Federal Status:	State Status:	SGCN: Y
Endemic:	Global Rank: G1	State Rank: S1

Samalayuca Dune grasshopper *Cibolacris samalayuca*

Habitat description is not available at this time.

Federal Status:	State Status:	SGCN: Y
Endemic:	Global Rank: G2?	State Rank: S2?

MAMMALS

big brown bat *Eptesicus fuscus*

Any wooded areas or woodlands except south Texas. Riparian areas in west Texas.

Federal Status:	State Status:	SGCN: Y
Endemic: N	Global Rank: G5	State Rank: S5

big free-tailed bat *Nyctinomops macrotis*

Habitat data sparse but records indicate that species prefers to roost in crevices and cracks in high canyon walls, but will use buildings, as well; reproduction data sparse, gives birth to single offspring late June-early July; females gather in nursery colonies; winter habits undetermined, but may hibernate in the Trans-Pecos; opportunistic insectivore

Federal Status:	State Status:	SGCN: Y
Endemic: N	Global Rank: G5	State Rank: S3

black-tailed prairie dog *Cynomys ludovicianus*

Dry, flat, short grasslands with low, relatively sparse vegetation, including areas overgrazed by cattle; live in large family groups

Federal Status:	State Status:	SGCN: Y
Endemic: N	Global Rank: G4	State Rank: S3

cave myotis bat *Myotis velifer*

Colonial and cave-dwelling; also roosts in rock crevices, old buildings, carports, under bridges, and even in abandoned Cliff Swallow (*Hirundo pyrrhonota*) nests; roosts in clusters of up to thousands of individuals; hibernates in limestone caves of Edwards Plateau and gypsum cave of Panhandle during winter; opportunistic insectivore.

Federal Status:	State Status:	SGCN: Y
Endemic: N	Global Rank: G4G5	State Rank: S2S3

DISCLAIMER

The information on this web application is provided "as is" without warranty as to the currentness, completeness, or accuracy of any specific data. The data provided are for planning, assessment, and informational purposes. Refer to the Frequently Asked Questions (FAQs) on the application website for further information.

EL PASO COUNTY

MAMMALS

desert pocket gopher

Geomys arenarius

Cottonwood-willow association along the Rio Grande in El Paso and Hudspeth counties; does not tolerate clayey or gravelly soils characteristic of the other *Geomys* species; common along irrigation ditches in the sandy river bottom area. Lives underground, but build large and conspicuous mounds; life history not well documented, but presumed to eat mostly vegetation, be active year round, and bear more than one litter per year.

Federal Status:	State Status:	SGCN: Y
Endemic: N	Global Rank: G3G4	State Rank: S2

eastern red bat

Lasiurus borealis

Red bats are migratory bats that are common across Texas. They are most common in the eastern and central parts of the state, due to their requirement of forests for foliage roosting. West Texas specimens are associated with forested areas (cottonwoods). Also common along the coastline. These bats are highly mobile, seasonally migratory, and practice a type of "wandering migration". Associations with specific habitat is difficult unless specific migratory stopover sites or wintering grounds are found. Likely associated with any forested area in East, Central, and North Texas but can occur statewide.

Federal Status:	State Status:	SGCN: Y
Endemic: N	Global Rank: G3G4	State Rank: S4

hoary bat

Lasiurus cinereus

Hoary bats are highly migratory, high-flying bats that have been noted throughout the state. Females are known to migrate to Mexico in the winter, males tend to remain further north and may stay in Texas year-round. Commonly associated with forests (foliage roosting species) but are found in unforested parts of the state and lowland deserts. Tend to be captured over water and large, open flyways.

Federal Status:	State Status:	SGCN: Y
Endemic: N	Global Rank: G3G4	State Rank: S3

kit fox

Vulpes macrotis

Open desert grassland; avoids rugged, rocky terrain and wooded areas.

Federal Status:	State Status:	SGCN: N
Endemic: N	Global Rank: G4	State Rank: S1S2

long-legged myotis bat

Myotis volans

Found in pine-oak woodland to grassland ecotone, higher elevations of Trans-Pecos. High, open woods and mountainous terrain; nursery colonies (which may contain several hundred individuals) form in summer in buildings, crevices, and hollow trees; apparently does not use caves as day roosts, but may use such sites at night; single offspring born June-July.

Federal Status:	State Status:	SGCN: Y
Endemic: N	Global Rank: G4G5	State Rank: S1S2

long-tailed weasel

Mustela frenata

Includes brushlands, fence rows, upland woods and bottomland hardwoods, forest edges & rocky desert scrub. Usually live close to water.

Federal Status:	State Status:	SGCN: Y
Endemic: N	Global Rank: G5	State Rank: S5

DISCLAIMER

The information on this web application is provided "as is" without warranty as to the currentness, completeness, or accuracy of any specific data. The data provided are for planning, assessment, and informational purposes. Refer to the Frequently Asked Questions (FAQs) on the application website for further information.

EL PASO COUNTY

MAMMALS

mountain lion

Puma concolor

Generalist; found in a wide range of habitats statewide. Found most frequently in rugged mountains & riparian zones.

Federal Status:

State Status:

SGCN: Y

Endemic: N

Global Rank: G5

State Rank: S2S3

muskkrat

Ondatra zibethicus

Found in fresh or brackish marshes, lakes, ponds, swamps, and other bodies of slow-moving water. Most abundant in areas with cattail. Dens in bank burrow or conical house of vegetation in shallow vegetated water. It is primarily found in the Rio Grande near El Paso and in SE Texas in the Houston area.

Federal Status:

State Status:

SGCN: Y

Endemic: N

Global Rank: G5

State Rank: S5

pronghorn

Antilocapra americana

Prefers hilly and plateau areas of open grassland, desert-grassland, and desert-scrub, where it frequents south-facing slopes and other sheltered areas.

Federal Status:

State Status:

SGCN: Y

Endemic: N

Global Rank: G5

State Rank: S3

rock mouse

Peromyscus nasutus

Rocky areas and talus slopes above 6000 feet. General vegetation associations include madrone, oak, maple, juniper, pinyon and ponderosa pine.

Federal Status:

State Status:

SGCN: Y

Endemic: N

Global Rank: G5

State Rank: S4

Townsend's big-eared bat

Corynorhinus townsendii

In Texas, habitat ranges from desert scrub to pinyon-juniper woodland, consistently in areas with canyons or cliffs (Schmidly 1991). Roosts in caves, crevases, trees, and buildings in the Panhandle and Trans-Pecos.

Federal Status:

State Status:

SGCN: Y

Endemic: N

Global Rank: G4

State Rank: S3?

western hog-nosed skunk

Conepatus leuconotus

Habitats include woodlands, grasslands & deserts, to 7200 feet, most common in rugged, rocky canyon country; little is known about the habitat of the ssp. *telmalestes*

Federal Status:

State Status:

SGCN: Y

Endemic: N

Global Rank: G4

State Rank: S4

DISCLAIMER

The information on this web application is provided "as is" without warranty as to the currentness, completeness, or accuracy of any specific data. The data provided are for planning, assessment, and informational purposes. Refer to the Frequently Asked Questions (FAQs) on the application website for further information.

EL PASO COUNTY

MAMMALS

western small-footed myotis bat *Myotis ciliolabrum*

Mountainous regions of the Trans-Pecos, usually in wooded areas, also found in grassland and desert scrub habitats; roosts beneath slabs of rock, behind loose tree bark, and in buildings; maternity colonies often small and located in abandoned houses, barns, and other similar structures; apparently occurs in Texas only during spring and summer months; insectivorous

Federal Status:	State Status:	SGCN: Y
Endemic: N	Global Rank: G5	State Rank: S3

western spotted skunk *Spilogale gracilis*

Brushy canyons, rocky outcrops (rimrock) on hillsides and walls of canyons. In semi-arid brushlands in U.S., in wet tropical forests in Mexico. When inactive or bearing young, occupies den in rocks, burrow, hollow log, brush pile, or under building.

Federal Status:	State Status:	SGCN: Y
Endemic: N	Global Rank: G5	State Rank: S5

western yellow bat *Lasiurus xanthinus*

Forages over water both perennial and intermittent sources, found at low elevations (< 6,000 feet), roosts in vegetation (yucca, hackberry, sycamore, cypress, and especially palm); also hibernates in palm; locally common in residential areas landscaped with palms in Tuscon and Phoenix, Arizona; young born in June; insectivore

Federal Status:	State Status:	SGCN: Y
Endemic: N	Global Rank: G4G5	State Rank: S1

MOLLUSKS

Franklin Mountain talus snail *Sonorella metcalfi*

Terrestrial; bare rock, talus, scree; inhabits igneous talus most commonly of rhyolitic origin

Federal Status:	State Status:	SGCN: Y
Endemic: N	Global Rank: G2	State Rank: S2

Franklin Mountain wood snail *Ashmunella pasonis*

Terrestrial; bare rock, talus, scree; talus slopes, usually of limestone, but also of rhyolite, sandstone, and siltstone, in arid mountain ranges

Federal Status:	State Status:	SGCN: Y
Endemic:	Global Rank: G2G3	State Rank: S2

Huecos Mountains talus snail *Sonorella huecoensis*

Habitat description is not available at this time.

Federal Status:	State Status:	SGCN: Y
Endemic: Y	Global Rank: G1G2	State Rank: S1

REPTILES

Big Bend slider *Trachemys gaigeae*

Aquatic: Rivers with permanent water; ponds, impoundments, and stock tanks along the Rio Grande; basks on shore, emergent rocks, logs, vegetation mats, or at water surface.

DISCLAIMER

The information on this web application is provided "as is" without warranty as to the currentness, completeness, or accuracy of any specific data. The data provided are for planning, assessment, and informational purposes. Refer to the Frequently Asked Questions (FAQs) on the application website for further information.

EL PASO COUNTY

REPTILES

Federal Status:	State Status:	SGCN: Y
Endemic: N	Global Rank: G3	State Rank: S2

Chihuahuan Desert lyre snake *Trimorphodon wilkinsonii*

Terrestrial: Rocky areas with plenty of crevices and fissures. Preferred habitats include rock piles, outcrops and talus slopes. Also occurs in desert flats, succulent and scrub, and mountain canyons to about 6000 feet.

Federal Status:	State Status:	SGCN: Y
Endemic: N	Global Rank: G4	State Rank: S4

gray-checkered whiptail *Aspidoscelis dixonii*

Terrestrial: The habitat comprises rocky plains, dry washes, canyon bottoms, and desert scrub (ocotillo, creosotebush, opuntia) (Bartlett and Bartlett 1999); generally on rocky soils of desert shrublands and degraded grasslands on alluvial benches, canyon bottoms, and lower southwestern mountain slopes (Scudday 1973, Degenhardt et al. 1996).

Federal Status:	State Status:	SGCN: Y
Endemic: N	Global Rank: G5	State Rank: S2

longnose leopard lizard *Gambelia wislizenii*

This species occurs in open gravelly or sandy habitats that are sparsely vegetated with scattered brush. When threatened, this lizard will retreat to brush piles and rodent burrows to escape.

Federal Status:	State Status:	SGCN: Y
Endemic: N	Global Rank: G5	State Rank: S4

Mexican hog-nosed snake *Heterodon kennerlyi*

Habitat description is not available at this time.

Federal Status:	State Status:	SGCN: N
Endemic:	Global Rank: G4	State Rank: SNR

mountain short-horned lizard *Phrynosoma hernandesi*

Terrestrial: Generally restricted to high elevation grasslands and forested areas with open ground; soil may vary from rocky to sandy; burrows into soil or occupies rodent burrow when inactive.

Federal Status:	State Status: T	SGCN: Y
Endemic: N	Global Rank: G5	State Rank: S2

roundtail horned lizard *Phrynosoma modestum*

This species seems to prefer rocky or gravelly substrates in open areas that are sparsely vegetated.

Federal Status:	State Status:	SGCN: Y
Endemic: N	Global Rank: G5	State Rank: S4

Texas horned lizard *Phrynosoma cornutum*

DISCLAIMER

The information on this web application is provided "as is" without warranty as to the currentness, completeness, or accuracy of any specific data. The data provided are for planning, assessment, and informational purposes. Refer to the Frequently Asked Questions (FAQs) on the application website for further information.

EL PASO COUNTY

REPTILES

Terrestrial: Open habitats with sparse vegetation, including grass, prairie, cactus, scattered brush or scrubby trees; soil may vary in texture from sandy to rocky; burrows into soil, enters rodent burrows, or hides under rock when inactive. Occurs to 6000 feet, but largely limited below the pinyon-juniper zone on mountains in the Big Bend area.

Federal Status:	State Status: T	SGCN: Y
Endemic: N	Global Rank: G4G5	State Rank: S3

western box turtle *Terrapene ornata*

Terrestrial: Ornate or western box turtles inhabit prairie grassland, pasture, fields, sandhills, and open woodland. They are essentially terrestrial but sometimes enter slow, shallow streams and creek pools. For shelter, they burrow into soil (e.g., under plants such as yucca) (Converse et al. 2002) or enter burrows made by other species.

Federal Status:	State Status:	SGCN: Y
Endemic: N	Global Rank: G5	State Rank: S3

western hognose snake *Heterodon nasicus*

Terrestrial: Shortgrass or mixed grass prairie, with gravel or sandy soils. Often found associated with draws, floodplains, and more mesic habitats within the arid landscape. Frequently occurs in shrub encroached grasslands.

Federal Status:	State Status:	SGCN: Y
Endemic: N	Global Rank: G5	State Rank: S4

western massasauga *Sistrurus tergeminus*

Terrestrial: Shortgrass or mixed grass prairie, with gravel or sandy soils. Often found associated with draws, floodplains, and more mesic habitats within the arid landscape. Frequently occurs in shrub encroached grasslands.

Federal Status:	State Status:	SGCN: Y
Endemic: N	Global Rank: G3G4	State Rank: S3

western rattlesnake *Crotalus viridis*

Terrestrial: Dry desert and prairie grasslands, shrub desert rocky hillsides; edges of arid and semi-arid river breaks.

Federal Status:	State Status:	SGCN: Y
Endemic: N	Global Rank: G5	State Rank: S5

PLANTS

Alamo beardtongue *Penstemon alamosensis*

Rocky soils derived from limestone (in Texas), usually in sheltered sites, often on north facing slopes and in mesic canyon bottoms, occasionally in rock crevices or among unbrowsed shrubs; flowering late April-June

Federal Status:	State Status:	SGCN: Y
Endemic: N	Global Rank: G3	State Rank: S1

DISCLAIMER

The information on this web application is provided "as is" without warranty as to the currentness, completeness, or accuracy of any specific data. The data provided are for planning, assessment, and informational purposes. Refer to the Frequently Asked Questions (FAQs) on the application website for further information.

EL PASO COUNTY

PLANTS

Bigelow's desert grass

Blepharidachne bigelovii

Restricted to xeric limestone or various gypsum-influenced habitats; Perennial; Flowering March-Dec; Fruiting March-Dec

Federal Status:

State Status:

SGCN: Y

Endemic: N

Global Rank: G3

State Rank: S3

Comal snakewood

Colubrina stricta

In El Paso County, found in a patch of thorny shrubs in colluvial deposits and sandy soils at the base of an igneous rock outcrop; the historic Comal County record does not describe the habitat; in Mexico ,found in shrublands on calcareous, gravelly, clay soils with woody associates; flowering late spring or early summer

Federal Status:

State Status:

SGCN: Y

Endemic: N

Global Rank: G2

State Rank: S1

dense cory cactus

Escobaria dasyacantha var. *dasyacantha*

Lechuguilla-sotol or creosote bush shrublands, grasslands, and oak-juniper woodlands on gravelly, rocky, and/or loamy soils over igneous or limestone substrates at moderate elevations 750-1800 m (2450-5900 ft) in the Chihuahuan Desert; flowering March-May (-July), fruiting (May-) June-August

Federal Status:

State Status:

SGCN: Y

Endemic: N

Global Rank: G3T3

State Rank: S3

desert night-blooming cereus

Peniocereus greggii var. *greggii*

Chihuahuan Desert shrublands or shrub invaded grasslands in alluvial or gravelly soils at lower elevations, 1200-1500 m (3900-4900 ft), on slopes, benches, arroyos, flats, and washes; flowering synchronized over a few nights in early May to late June when almost all mature plants bloom, flowers last only one day and open just after dark, may flower as early as April

Federal Status:

State Status:

SGCN: Y

Endemic: N

Global Rank: G3G4T3

State Rank: S2

fleshy tidestromia

Tidestromia carnosa

Occurs in saline or gypseous soils in open situations; Annual; Flowering March-Nov; Fruiting April-Nov

Federal Status:

State Status:

SGCN: Y

Endemic: N

Global Rank: G3

State Rank: S2

great sage

Salvia summa

Limestone cliffs and slopes in the Guadalupe and Franklin Mountains; Perennial; Flowering April-June; Fruiting May-Oct

Federal Status:

State Status:

SGCN: Y

Endemic: N

Global Rank: G3

State Rank: S2

Hueco rock-daisy

Perityle huecoensis

North-facing or otherwise mostly shaded limestone cliff faces within relatively mesic canyon system; flowering spring-fall

Federal Status:

State Status:

SGCN: Y

Endemic: N

Global Rank: G1

State Rank: S1

DISCLAIMER

The information on this web application is provided "as is" without warranty as to the currentness, completeness, or accuracy of any specific data. The data provided are for planning, assessment, and informational purposes. Refer to the Frequently Asked Questions (FAQs) on the application website for further information.

EL PASO COUNTY

PLANTS

lyreleaf twistflower *Streptanthus carinatus ssp. carinatus*

Occurs on igneous and limestone slopes and alluvial fans (Carr 2015).

Federal Status:	State Status:	SGCN: Y
Endemic: N	Global Rank: G4T3T4	State Rank: S3

Mt. Davis brickellbush *Brickellia parvula*

Occurs on rocky slopes and ridges in the mountains of the southwestern U.S. at elevations between 1200 and 2100 m; Perennial; Flowering Aug-Sept; Fruiting Sept-Oct

Federal Status:	State Status:	SGCN: Y
Endemic: N	Global Rank: G3	State Rank: S1

Payson's hiddenflower *Cryptantha paysonii*

Rocky limestone slopes in mountains; Perennial; Flowering May; Fruiting May-June

Federal Status:	State Status:	SGCN: Y
Endemic: N	Global Rank: G3	State Rank: S1

Plank's catchfly *Silene plankii*

Franklin Mountains of El Paso County, occurring in crevices on shaded igneous cliff faces above ca. 5000 ft.; Perennial; Flowering summer-early autumn

Federal Status:	State Status:	SGCN: Y
Endemic: N	Global Rank: G2	State Rank: S1

resin-leaf brickellbush *Brickellia baccharidea*

Mixed desert shrublands on bajada slopes and in arroyos on sandy or gravelly soils derived from limestone, but also known from igneous substrates; flowering September-April

Federal Status:	State Status:	SGCN: Y
Endemic: N	Global Rank: G3	State Rank: S1

Ripley's senna *Senna ripleyana*

Gravelly hilltops in arid grasslands and creosote flats in Chihuahuan Desert; elevation ranges 1,200-1,500 m (3,900-4,900 ft); flowering/fruiting July-October

Federal Status:	State Status:	SGCN: Y
Endemic: N	Global Rank: G1	State Rank: SH

sand prickly-pear *Opuntia arenaria*

Deep, loose or semi-stabilized sands in sparsely vegetated dune or sandhill areas, or sandy floodplains in arroyos; flowering May-June

Federal Status:	State Status:	SGCN: Y
Endemic: N	Global Rank: G2	State Rank: S2

DISCLAIMER

The information on this web application is provided "as is" without warranty as to the currentness, completeness, or accuracy of any specific data. The data provided are for planning, assessment, and informational purposes. Refer to the Frequently Asked Questions (FAQs) on the application website for further information.

EL PASO COUNTY

PLANTS

Scheer's cory cactus	<i>Coryphantha scheeri</i> var. <i>uncinata</i>		
Rocky hillsides (Carr 2015).			
Federal Status:	State Status:	SGCN:	Y
Endemic: N	Global Rank: G4TUQ	State Rank:	S2
smooth bur-cucumber	<i>Sicyos glaber</i>		
Mesic canyons in the Chisos and Guadalupe Mountains (Carr 2015).			
Federal Status:	State Status:	SGCN:	Y
Endemic: N	Global Rank: G3	State Rank:	S1
Sneed's pincushion cactus	<i>Escobaria sneedii</i> var. <i>sneedii</i>		
Xeric limestone outcrops on rocky, usually steep slopes in desert mountains, in the Chihuahuan Desert succulent shrublands or grasslands; flowering April-September (peak usually in April, sometimes opportunistically after summer rains; fruiting August - November			
Federal Status: LE	State Status: E	SGCN:	Y
Endemic: N	Global Rank: G2G3QT2Q	State Rank:	S2
stalked rhombopod	<i>Cleomella longipes</i>		
Locally common in sparingly vegetated sandy or alkaline soils and along margins of seasonal wetlands in the Trans-Pecos (Carr 2015).			
Federal Status:	State Status:	SGCN:	Y
Endemic: N	Global Rank: G3G4	State Rank:	S3
Texas false saltgrass	<i>Allolepis texana</i>		
Sandy to silty soils of valley bottoms and river floodplains, not generally on alkaline or saline sites; Perennial; Flowering (May-) July-October depending on rainfall			
Federal Status:	State Status:	SGCN:	Y
Endemic: N	Global Rank: G2	State Rank:	S1
Vasey's bitterweed	<i>Hymenoxys vaseyi</i>		
Occurs on xeric limestone cliffs and slopes at mid- to high elevations in desert shrublands.			
Federal Status:	State Status:	SGCN:	Y
Endemic: N	Global Rank: G2	State Rank:	S1
Waterfall's milkvetch	<i>Astragalus waterfallii</i>		
Rocky limestone slopes; Perennial; Flowering Feb-May; Fruiting April- May			
Federal Status:	State Status:	SGCN:	Y
Endemic: N	Global Rank: G3?	State Rank:	S3

DISCLAIMER

The information on this web application is provided "as is" without warranty as to the currentness, completeness, or accuracy of any specific data. The data provided are for planning, assessment, and informational purposes. Refer to the Frequently Asked Questions (FAQs) on the application website for further information.

EL PASO COUNTY

PLANTS

Wheeler's spurge

Euphorbia geyeri var. *wheeleriana*

Sparingly vegetated, loose eolian quartz sand on reddish sand dunes or coppice mounds; flowering and fruiting at least August-September, probably earlier and later, as well

Federal Status:

State Status:

SGCN: Y

Endemic: N

Global Rank: G5T2

State Rank: S1

Wright's fishhook cactus

Mammillaria wrightii var. *wrightii*

Franklin Mountains (Carr 2015)

Federal Status:

State Status:

SGCN: Y

Endemic: N

Global Rank: G4T3

State Rank: SH

DISCLAIMER

The information on this web application is provided "as is" without warranty as to the currentness, completeness, or accuracy of any specific data. The data provided are for planning, assessment, and informational purposes. Refer to the Frequently Asked Questions (FAQs) on the application website for further information.

B-6 – Banks Environmental Database

Prepared for:
ESSCO ENVIRONMENTAL, INC.
1000 Newman St.
El Paso, TX 79902



Regulatory Database Report

ASTM E1527-21/AAI Compliant

EPW-23-13_Claridy Fox

El Paso, TX

El Paso County

ES-143536

Tuesday, February 13, 2024

Table of Contents



Geographic Summary	3
Dataset Summary	4
Summary Map - 0.25 Mile Radius	6
Summary Map - 0.5 Mile Radius	7
Summary Map - 1.0 Mile Radius	8
Water/Oil & Gas Wells Map - 0.25 Mile Radius	9
Water/Oil & Gas Wells Summary	10
Soil Survey Map - 0.25 Mile Radius	11
Soils Details	12
Soils Descriptions	13
Current Imagery Overlay Map - 0.5 Mile Radius	14
Topographic Overlay Map - 1.0 Mile Radius	15
Zip Code Map - 1.0 Mile Radius	16
Mapped Sites Summary	17
Unmapped Sites Summary	18
Mapped Sites Details	19
Unmapped Sites Details	23
Dataset Descriptions	24
Disclaimer	29

Geographic Summary



Location

El Paso County, TX

Target location is 1.84 acres, 0.003 square miles, and has a 0.25 mile perimeter

Coordinates (centroid)

Lat/Long in Degrees Minutes Seconds 31° 45' 16.43", -106° 25' 45.98"

Lat/Long in Decimal Degrees 31.754562509509952, -106.4294393034645

X/Y in NAD83 / UTM Zone 13N 364616.833535883, 3514120.63830068

Elevation (centroid)

3695.44 ft

Zip Codes Searched

Search Distance (mi)	Zip Codes
----------------------	-----------

Subject Property	79905
------------------	-------

0.25 miles	79905
------------	-------

0.5 miles	79905
-----------	-------

1.0 miles	79905
-----------	-------

Topos Searched

Search Distance	Topo Name
-----------------	-----------

Subject Property	El Paso (1973)
------------------	----------------

0.25 miles	El Paso (1973)
------------	----------------

0.5 miles	Ysleta NW (1967), El Paso (1973)
-----------	----------------------------------

1.0 miles	Ysleta NW (1967), El Paso (1973)
-----------	----------------------------------

Dataset Summary



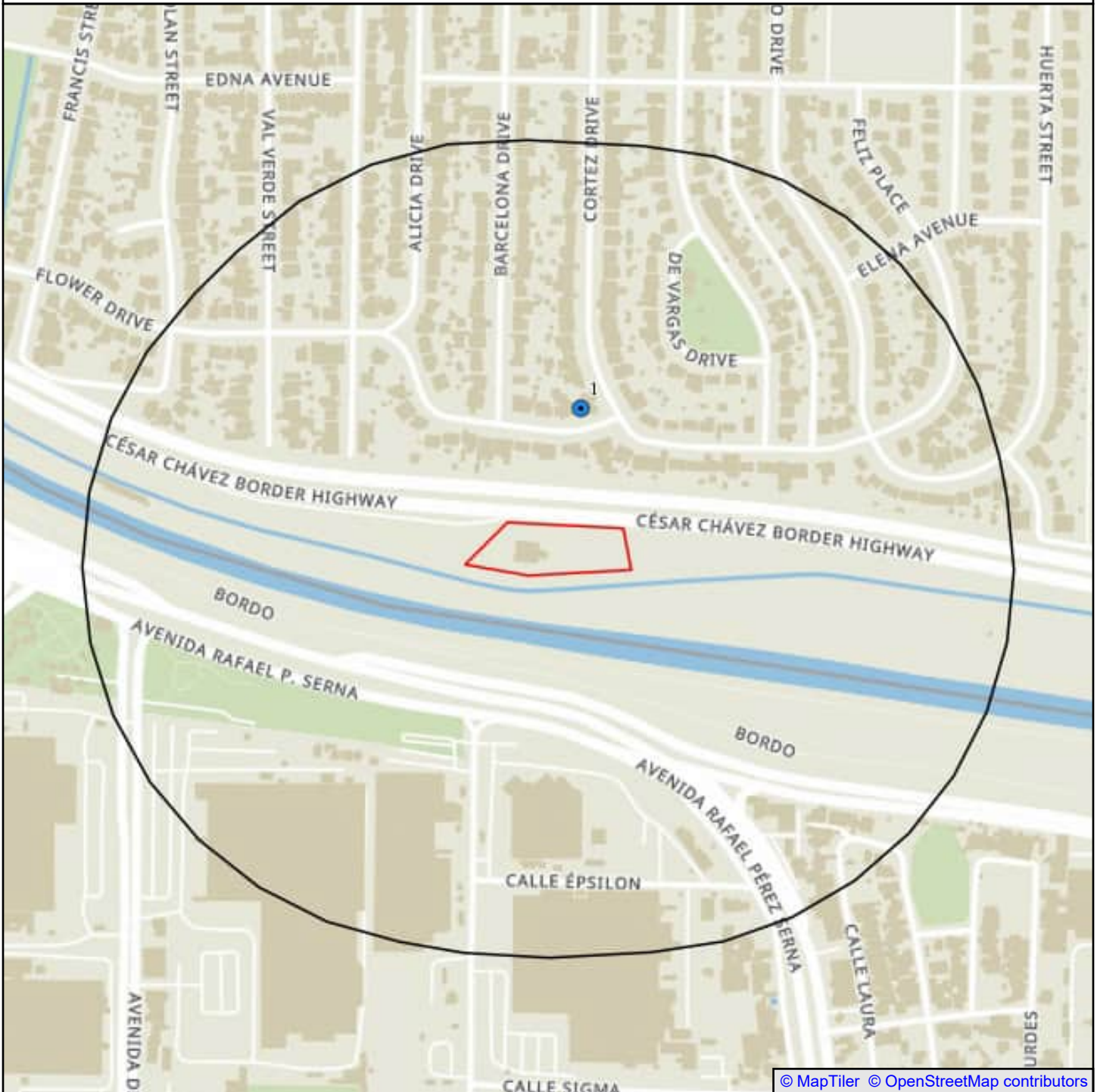
Datasets Searched		Distance	Mapped	Unmapped	Total
Federal - ASTM 1527-21/AAI Required					
CERCLIS - National Priority List (CER NPL)	●	1.0	0	0	0
CERCLIS - Delisted National Priority List (CER DNPL)	●	0.5	0	0	0
CERCLIS (CER)	●	0.5	0	0	0
CERCLIS - No Further Remedial Action Planned (CER NFRAP)	●	0.5	0	0	0
RCRA - Corrective Actions (RCRA COR)	●	1.0	0	0	0
RCRA - Treatment, Storage, Disposal (RCRA TSD)	●	0.5	0	0	0
RCRA - Very Small Quantity Generators (RCRA VSG)	●	0.25	0	0	0
RCRA - Small Quantity Generators (RCRA SQG)	●	0.25	0	0	0
RCRA - Large Quantity Generators (RCRA LQG)	●	0.25	0	0	0
Federal Brownfield (FED BF)	●	0.5	0	0	0
Federal Institutional Control (FED IC)	●	0.5	0	0	0
Federal Engineering Control (FED EC)	●	0.5	0	0	0
Emergency Response Notification System (ERNS)	●	0.25	0	1	1
RCRA (RCRA)	●	0.25	1	0	1
Tribal - ASTM 1527-21/AAI Required					
Tribal Region 6 - Leaking Petroleum Storage Tank (LPST)	●	0.5	0	0	0
Tribal Region 6 - Petroleum Storage Tank (PST)	●	0.25	0	0	0
State - ASTM 1527-21/AAI Required					
State National Priority List (ST PL)	●	1.0	0	0	0
State CERCLIS (ST CER)	●	0.5	0	0	0
Solid Waste (SW)	●	0.5	0	0	0

Dataset Summary



Leaking Petroleum Storage Tank (LPST)	●	0.5	0	0	0
Petroleum Storage Tank (PST)	●	0.25	0	0	0
State Institutional Control (IC)	●	0.25	0	0	0
State Engineering Control (EC)	●	0.5	0	0	0
Voluntary Cleanup Program (VCP)	●	0.5	0	0	0
State Brownfield (BF)	●	0.5	0	0	0
Hazardous Waste (HW)	●	0.5	1	0	1
Dry Cleaner (DRYC)	●	0.25	0	0	0
Municipal Setting Designation (MSD)	●	0.25	0	0	0
Local - Non-ASTM 1527-21/AAI Required					
Leaking Petroleum Storage Tank (LPST)	●	0.5	0	0	0
Petroleum Storage Tank (PST)	●	0.25	0	0	0
Total Sites Found			2	1	3

Summary Map - 0.25 Mile Radius



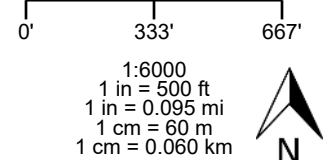
© MapTiler © OpenStreetMap contributors

EPW-23-13_Clardy Fox

- | | | |
|------------------------|------------------------|------------------------|
| ▼ Single site (below) | ▼ Single site (below) | ▼ Single site (below) |
| ● Single site (same) | ● Single site (same) | ● Single site (same) |
| ▲ Single site (above) | ▲ Single site (above) | ▲ Single site (above) |
| ▼ Cluster site (below) | ▼ Cluster site (below) | ▼ Cluster site (below) |
| ● Cluster site (same) | ● Cluster site (same) | ● Cluster site (same) |
| ▲ Cluster site (above) | ▲ Cluster site (above) | ▲ Cluster site (above) |
| ■ Polygon site | ■ Polygon site | ■ Polygon site |

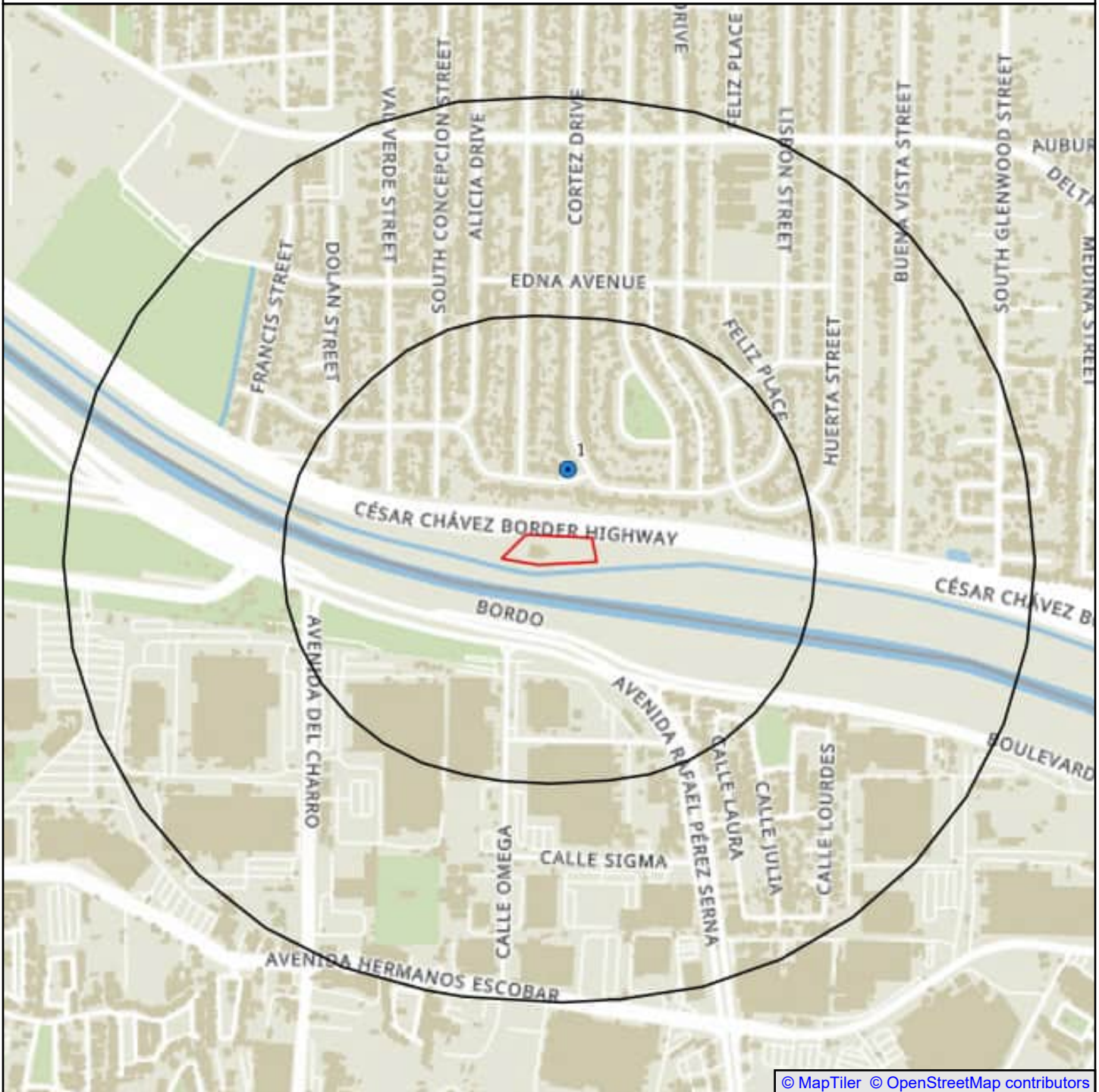
RCRA,HV

- Subject Site
- Search Buffer



NAD83 / UTM Zone 13N
North American Datum 1983
Western Meridian: 108 0' 00" West
Eastern Meridian: 102 0' 00" West
Latitude of Origin: 0 0' 00" North

Summary Map - 0.5 Mile Radius



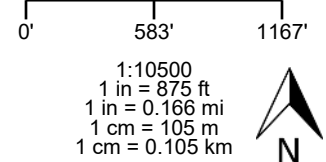
© MapTiler © OpenStreetMap contributors

EPW-23-13_Clardy Fox

- | | | |
|------------------------|------------------------|------------------------|
| ▼ Single site (below) | ▼ Single site (below) | ▼ Single site (below) |
| ● Single site (same) | ● Single site (same) | ● Single site (same) |
| ▲ Single site (above) | ▲ Single site (above) | ▲ Single site (above) |
| ▼ Cluster site (below) | ▼ Cluster site (below) | ▼ Cluster site (below) |
| ● Cluster site (same) | ● Cluster site (same) | ● Cluster site (same) |
| ▲ Cluster site (above) | ▲ Cluster site (above) | ▲ Cluster site (above) |
| ■ Polygon site | ■ Polygon site | ■ Polygon site |

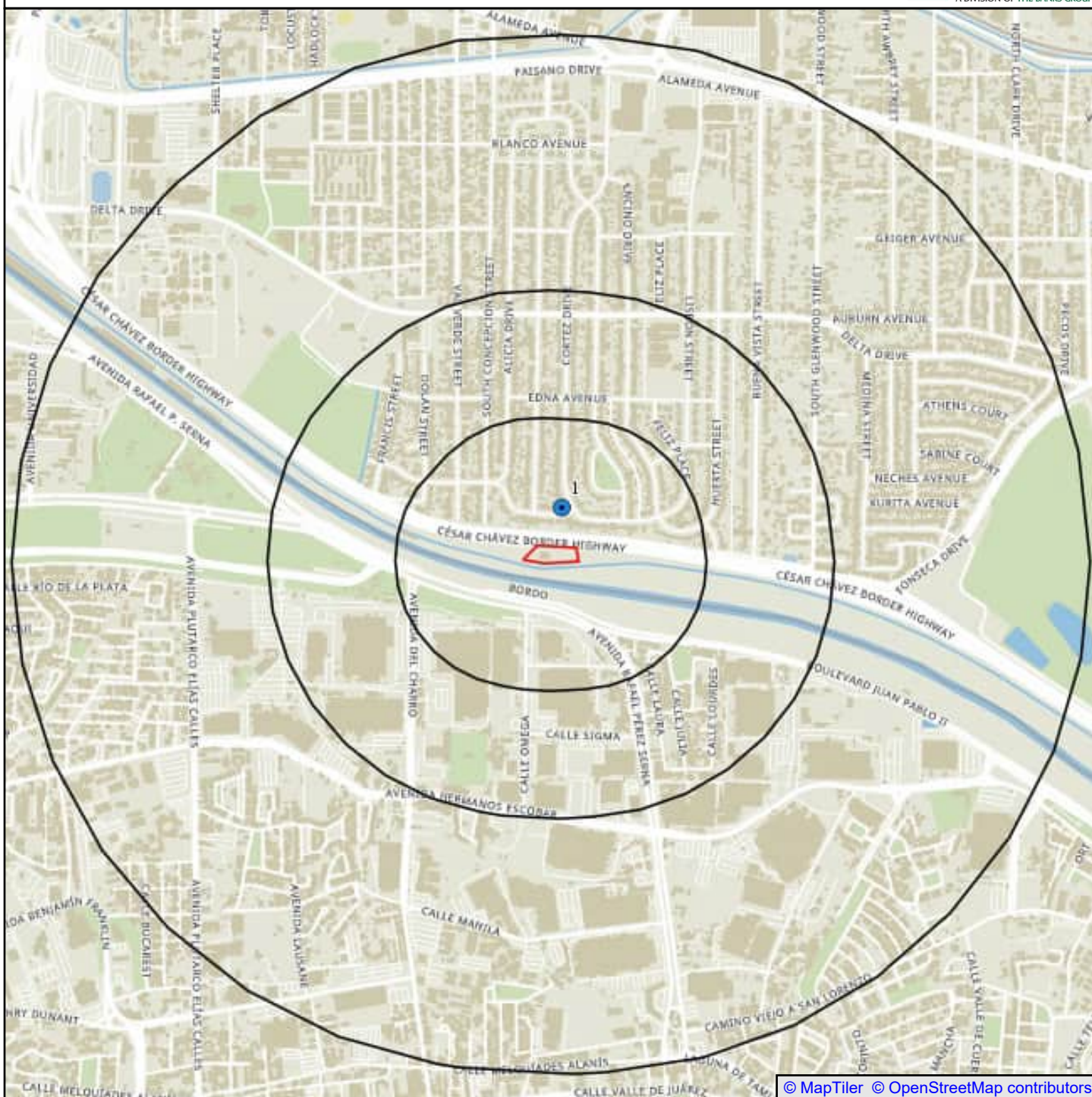
RCRA,HW

- Subject Site
- Search Buffer



NAD83 / UTM Zone 13N
North American Datum 1983
Western Meridian: 108 0' 00" West
Eastern Meridian: 102 0' 00" West
Latitude of Origin: 0 0' 00" North

Summary Map - 1.0 Mile Radius



EPW-23-13_Clardy Fox

- | | | |
|------------------------|------------------------|------------------------|
| ▼ Single site (below) | ▼ Single site (below) | ▼ Single site (below) |
| ● Single site (same) | ● Single site (same) | ● Single site (same) |
| ▲ Single site (above) | ▲ Single site (above) | ▲ Single site (above) |
| ▼ Cluster site (below) | ▼ Cluster site (below) | ▼ Cluster site (below) |
| ● Cluster site (same) | ● Cluster site (same) | ● Cluster site (same) |
| ▲ Cluster site (above) | ▲ Cluster site (above) | ▲ Cluster site (above) |
| ■ Polygon site | ■ Polygon site | ■ Polygon site |

RCRA,HW

- Subject Site
- Search Buffer

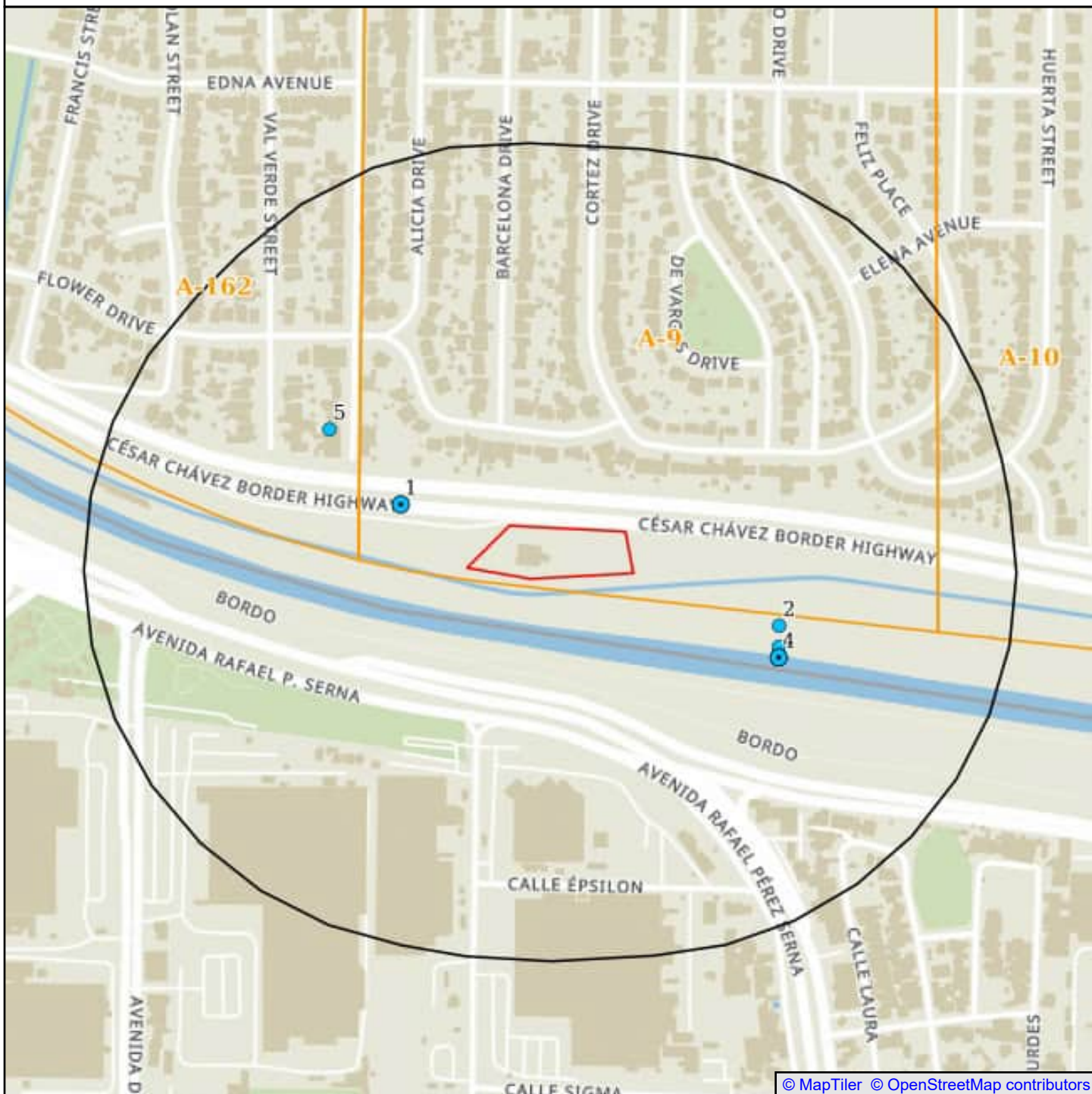
0' 1000' 2000'

1:18000
1 in = 1500 ft
1 in = 0.284 mi
1 cm = 180 m
1 cm = 0.180 km



NAD83 / UTM Zone 13N
North American Datum 1983
Western Meridian: 108 0' 00" West
Eastern Meridian: 102 0' 00" West
Latitude of Origin: 0 0' 00" North

Water/Oil & Gas Wells Map - 0.25 Mile Radius

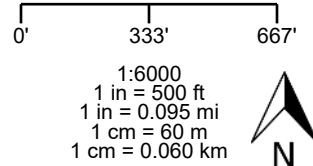


© MapTiler © OpenStreetMap contributors

EPW-23-13_Clarly Fox

- Single Water Well
- Water Well Cluster
- Single Oil/Gas Well
- Oil/Gas Well Cluster

- Subject Site
- Search Buffer
- Land Survey



NAD83 / UTM Zone 13N
North American Datum 1983
Western Meridian: 108 0' 00" West
Eastern Meridian: 102 0' 00" West
Latitude of Origin: 0 0' 00" North

Water/Oil & Gas Wells Summary



Map ID	Well ID	Owner	Well Type	Elevation
1	4913812	International Boundary and Water Commission	Water Well	3698.59 ft
1	4913808	El Paso Water Utility/ Public Service Board	Water Well	3698.59 ft
2	4913844	U. S. Bureau of Reclamation	Water Well	3693.31 ft
3	USGS314513106253502	USGS	Water Well	3692.75 ft
4	4913842	U. S. Bureau of Reclamation	Water Well	3685.70 ft
4	4913841	U.S. Bureau of Reclamation	Water Well	3685.70 ft
4	4913843	U. S. Bureau of Reclamation	Water Well	3685.70 ft
5	USGS314518106255001	USGS	Water Well	3697.05 ft

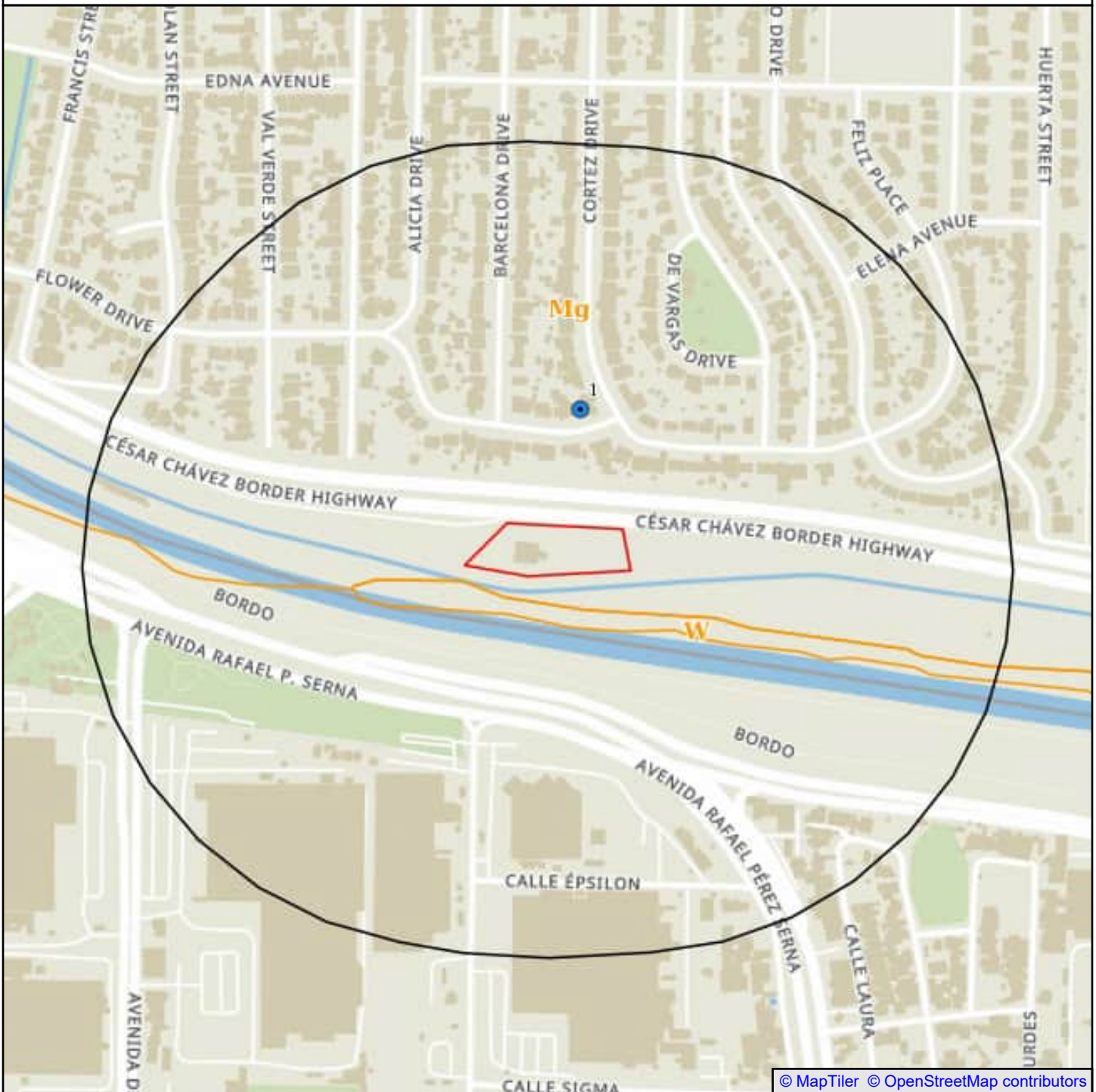
Source

U.S. Geological Survey, Texas Water Development Board (GW and Submitted Driller's Report), Texas Commission of Environmental Quality (PWS), Railroad Commission of Texas (Production Data)

Disclaimer

This well scan from Banks Environmental Data, Inc. has included a digital search of state and federal wells currently digitized in our geospatial database. Since this scan includes only well data that is currently mapped in our geospatial database, more wells could exist within the search area. For a complete well search or to locate more details, please contact Banks to obtain a full Water Well Report or Oil & Gas Well/Pipeline Search Report. More detailed individual well records can also be obtained from Banks for an additional cost, please reference a Well ID # from this well scan. All well locations are based on information obtained from state and federal sources. Although Banks performs quality assurance and quality control on all data, inaccuracies of the records and mapped locations could possibly be traced to the specific regulatory authority or individual well driller. Banks Environmental Data, Inc. cannot fully guarantee the accuracy of the data or well location(s) of the maps and records maintained by the state and federal agencies.

Soil Survey Map - 0.25 Mile Radius

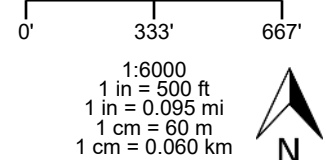


EPW-23-13_Clardy Fox

- | | | |
|------------------------|------------------------|------------------------|
| ▼ Single site (below) | ▼ Single site (below) | ▼ Single site (below) |
| ● Single site (same) | ● Single site (same) | ● Single site (same) |
| ▲ Single site (above) | ▲ Single site (above) | ▲ Single site (above) |
| ▼ Cluster site (below) | ▼ Cluster site (below) | ▼ Cluster site (below) |
| ● Cluster site (same) | ● Cluster site (same) | ● Cluster site (same) |
| ▲ Cluster site (above) | ▲ Cluster site (above) | ▲ Cluster site (above) |
| ■ Polygon site | ■ Polygon site | ■ Polygon site |

RCRA,HV

- Subject Site
- Search Buffer
- Soils Boundary



NAD83 / UTM Zone 13N
North American Datum 1983
Western Meridian: 108 0' 00" West
Eastern Meridian: 102 0' 00" West
Latitude of Origin: 0 0' 00" North

Soils Details

Soil Types Found

Subject Property	Mg
Within 0.25 miles of Subject Property	W

Soil Type Descriptions

Mg - Made land, gila soil material

Percent Hydric 5

Minimum Depth to Bedrock

Gila (90%)

Hydrologic Group Moderately low runoff potential

Soil Drainage Class Well drained

Corrosion Potential - Uncoated Steel Moderate

Depth to Restrictive Feature

Horizon	Soil Texture	Upper Boundary	Lower Boundary	AASHTO	Unified
H1	Fine sandy loam	0 cm	25 cm	A-4	ML
H2	Loam, silt loam	25 cm	56 cm	A-4	ML, SM
H3	Gravelly sandy loam	56 cm	69 cm	A-4	ML, SM
H4	Silt loam	69 cm	160 cm	A-4	ML, SM

Unnamed, hydric (5%)

Hydrologic Group

Soil Drainage Class

Corrosion Potential - Uncoated Steel

Depth to Restrictive Feature

Unnamed (5%)

Hydrologic Group

Soil Drainage Class

Corrosion Potential - Uncoated Steel

Depth to Restrictive Feature

W - Water

Percent Hydric 0

Minimum Depth to Bedrock

Water (100%)

Hydrologic Group High runoff potential

Soil Drainage Class

Corrosion Potential - Uncoated Steel

Depth to Restrictive Feature

Soils Descriptions

AASHTO Classification Definitions

A-1, A-1-a, A-1-b	Granular materials (35% or less passing No. 200 sieve), some fragments, gravel and sand
A-2, A-2-4, A-2-5, A-2-6, A-2-7	Granular materials (35% or less passing No. 200 sieve), silty or clayey gravel and sand
A-3	Granular materials (35% or less passing No. 200 sieve), fine sand
A-4	Silt-Clay materials (more than 35% passing No. 200 sieve), silty soils
A-5	Silt-Clay materials (more than 35% passing No. 200 sieve), silty soils
A-6	Silt-Clay materials (more than 35% passing No. 200 sieve), clayey soils
A-7, A-7-5, A-7-6	Silt-Clay materials (more than 35% passing No. 200 sieve), clayey soils
A-8	Silt-Clay materials (more than 35% passing No. 200 sieve), clayey soils

Unified Classification Definitions

CH	Fine-grained soils, silts and clays (liquid limit is 50% or more), Fat Clay
CL, CL-A (proposed), CL-K (proposed), CL-ML, CL-O (proposed), CL-T (proposed)	Fine-grained soils, silts and clays (liquid limit is less than 50%), Lean Clay
GC, GC-GM	Coarse-grained soils, Gravels, gravel with fines, Clayey Gravel
GM	Coarse-grained soils, Gravels, gravel with fines, Silty Gravel
GP, GP-GC, GP-GM	Coarse-grained soils, Gravels, clean gravels, Poorly Graded Gravel
GW, GW-GC, GW-GM	Coarse-grained soils, Gravels, clean gravels, Well-Graded Gravel
MH, MH-A, MH-K, MH-O, MH-T	Fine-grained soils, silts and clays (liquid limit is 50% or more), Elastic Silt
ML, ML-A (proposed), ML-K (proposed), ML-O (proposed), ML-T (proposed)	Fine-grained soils, silts and clays (liquid limit is less than 50%), Silt
OH, OH-T (proposed)	Fine-grained soils, silts and clays (liquid limit is 50% or more), Organic Clay or Organic Silt
OL	Fine-grained soils, silts and clays (liquid limit is less than 50%), Organic Clay or Organic Silt
PT	Highly organic soils, Peat
SC, SC-SM	Coarse-grained soils, Sands, sands with fines, Clayey Sand
SM	Coarse-grained soils, Sands, sands with fines, Silty Sand
SP, SP-SC, SP-SM	Coarse-grained soils, Sands, clean sands, Poorly Graded Sand
SW, SW-SC, SW-SM	Coarse-grained soils, Sands, clean sands, Well-Graded Sand

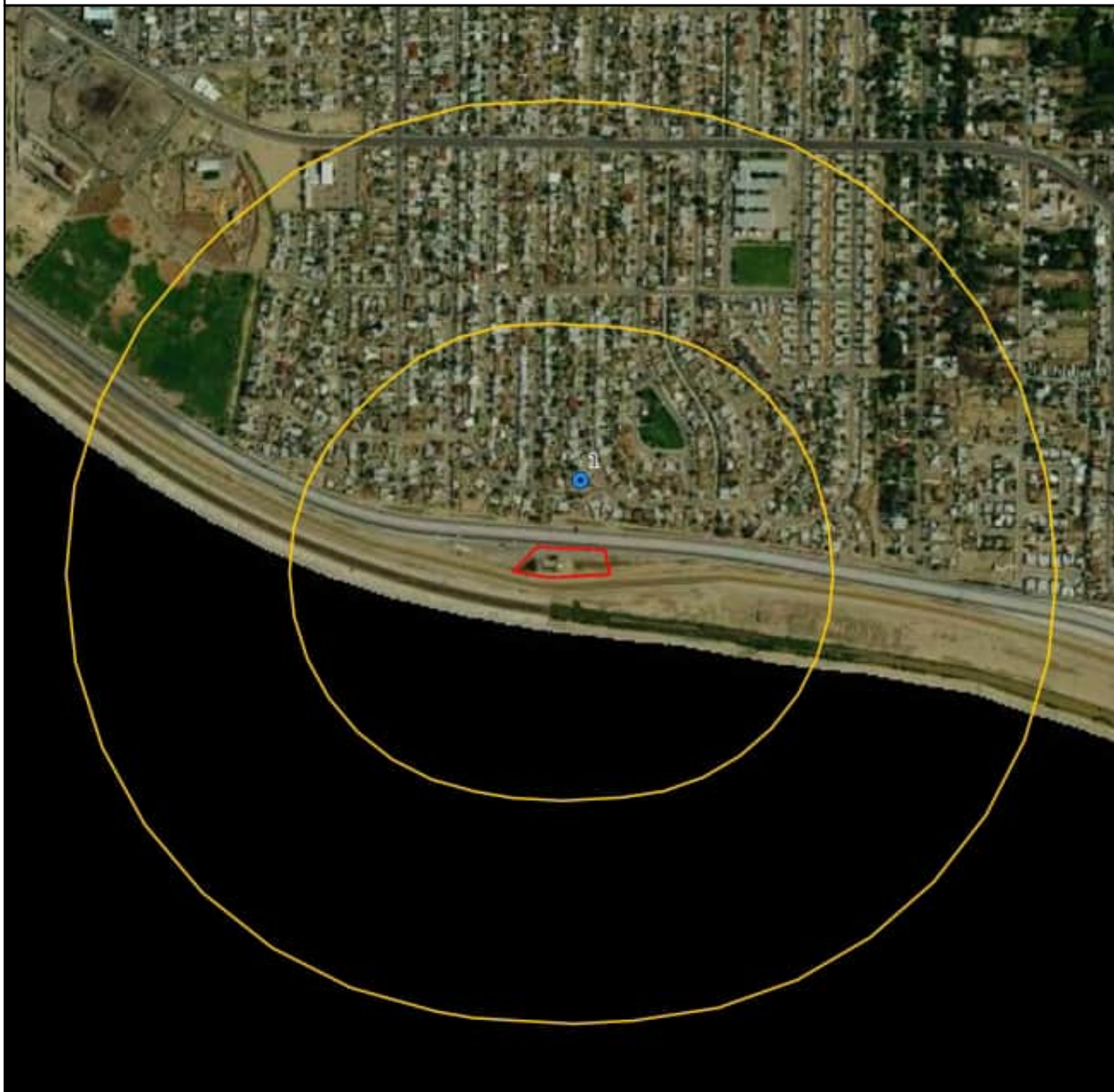
Source

Natural Resources Conservation Service, Soil Survey Geographic (SSURGO) Database.

Disclaimer

This Soils Survey from Banks Environmental Data, Inc. has searched Natural Resources Conservation Service (NRCS) and the Soil Survey Geographic Database (SSURGO). All soil data presented on the map and in the details section are based on information obtained from NRCS. Although Banks performs quality assurance and quality control on all data, inaccuracies of the data and mapped locations could possibly be traced to the source. Banks Environmental Data, Inc. cannot fully guarantee the accuracy of the SSURGO database maintained by NRCS.

Current Imagery Overlay Map - 0.5 Mile Radius

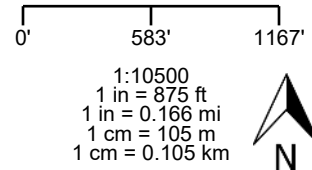


© MapTiler © OpenStreetMap contributors

EPW-23-13_Clardy Fox

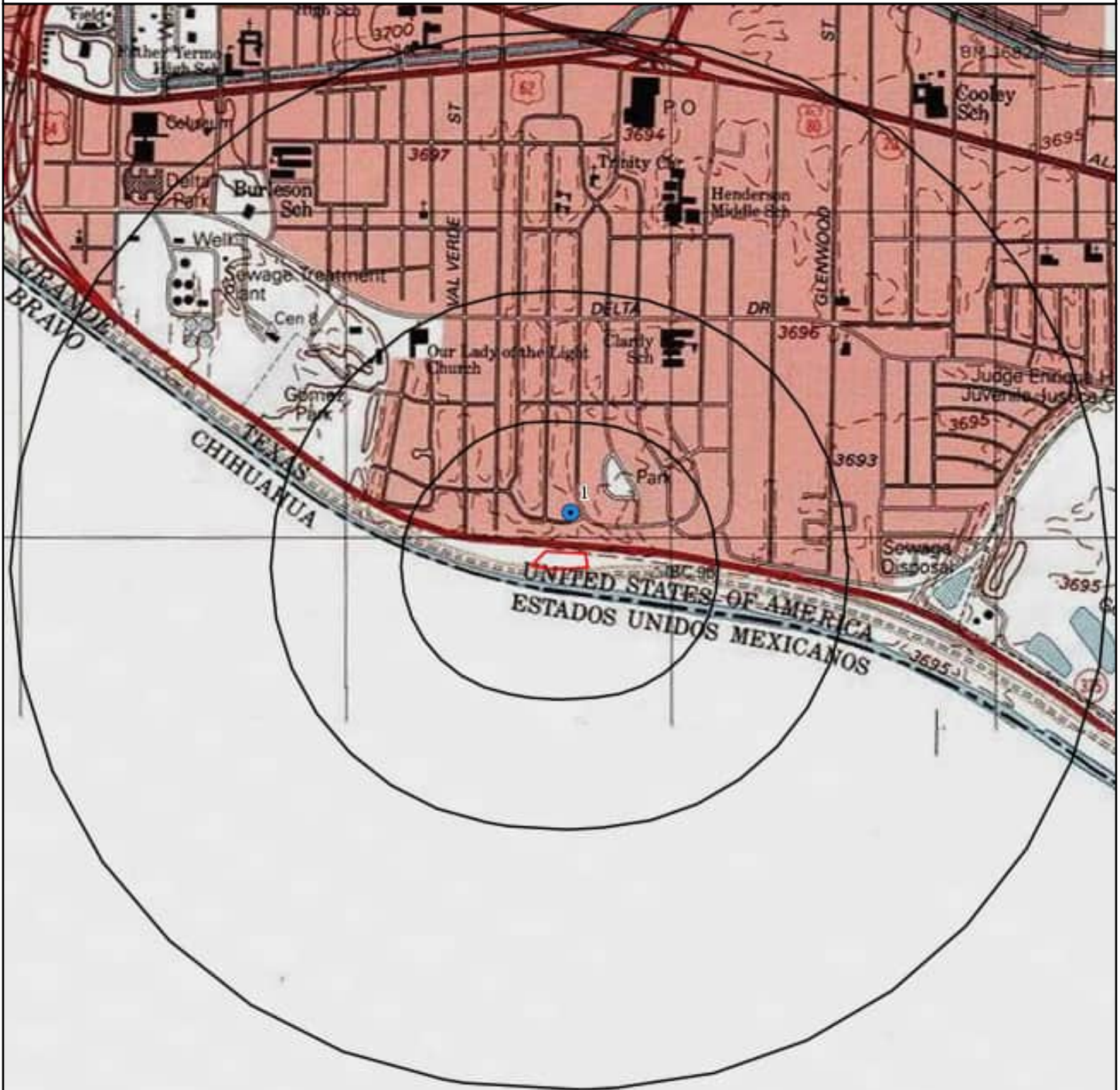
- | | | | |
|------------------------|------------------------|------------------------|-----------------|
| ▼ Single site (below) | ▼ Single site (below) | ▼ Single site (below) | ■ Subject Site |
| ● Single site (same) | ● Single site (same) | ● Single site (same) | |
| ▲ Single site (above) | ▲ Single site (above) | ▲ Single site (above) | ■ Search Buffer |
| ▼ Cluster site (below) | ▼ Cluster site (below) | ▼ Cluster site (below) | |
| ● Cluster site (same) | ● Cluster site (same) | ● Cluster site (same) | |
| ▲ Cluster site (above) | ▲ Cluster site (above) | ▲ Cluster site (above) | |
| ■ Polygon site | ■ Polygon site | ■ Polygon site | |

RCRA,HW



NAD83 / UTM Zone 13N
North American Datum 1983
Western Meridian: 108 0' 00" West
Eastern Meridian: 102 0' 00" West
Latitude of Origin: 0 0' 00" North

Topographic Overlay Map - 1.0 Mile Radius



Basemap courtesy of U.S. Geological Survey

EPW-23-13_Clardy Fox

Subject Property Quad Name(s)
El Paso (1973)

- | | | |
|------------------------|------------------------|------------------------|
| ▼ Single site (below) | ▼ Single site (below) | ▼ Single site (below) |
| ● Single site (same) | ● Single site (same) | ● Single site (same) |
| ▲ Single site (above) | ▲ Single site (above) | ▲ Single site (above) |
| ▼ Cluster site (below) | ▼ Cluster site (below) | ▼ Cluster site (below) |
| ● Cluster site (same) | ● Cluster site (same) | ● Cluster site (same) |
| ▲ Cluster site (above) | ▲ Cluster site (above) | ▲ Cluster site (above) |
| ■ Polygon site | ■ Polygon site | ■ Polygon site |

- Subject Site
- Search Buffer

0' 1000' 2000'

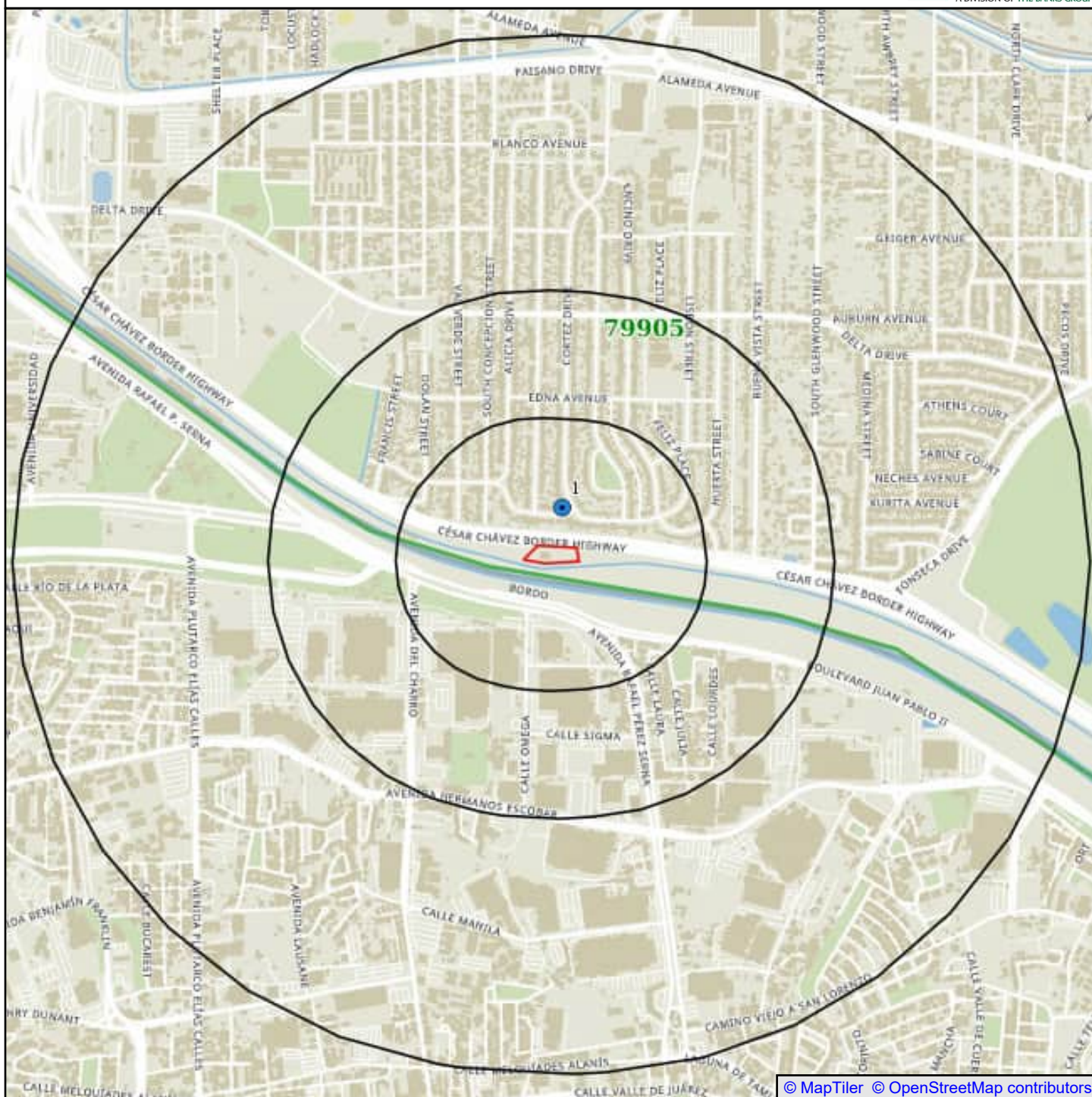
1:18000
1 in = 1500 ft
1 in = 0.284 mi
1 cm = 180 m
1 cm = 0.180 km



NAD83 / UTM Zone 13N
North American Datum 1983
Western Meridian: 108 0' 00" West
Eastern Meridian: 102 0' 00" West
Latitude of Origin: 0 0' 00" North

RCRA,HW

Zip Code Map - 1.0 Mile Radius

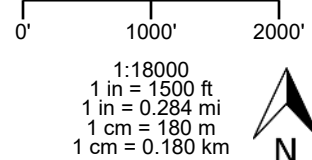


EPW-23-13_Clardy Fox

- | | | |
|------------------------|------------------------|------------------------|
| ▼ Single site (below) | ▼ Single site (below) | ▼ Single site (below) |
| ● Single site (same) | ● Single site (same) | ● Single site (same) |
| ▲ Single site (above) | ▲ Single site (above) | ▲ Single site (above) |
| ▼ Cluster site (below) | ▼ Cluster site (below) | ▼ Cluster site (below) |
| ● Cluster site (same) | ● Cluster site (same) | ● Cluster site (same) |
| ▲ Cluster site (above) | ▲ Cluster site (above) | ▲ Cluster site (above) |
| ■ Polygon site | ■ Polygon site | ■ Polygon site |

RCRA,HW

- Subject Site
- Search Buffer
- Zip Code Boundary



NAD83 / UTM Zone 13N
North American Datum 1983
Western Meridian: 108 0' 00" West
Eastern Meridian: 102 0' 00" West
Latitude of Origin: 0 0' 00" North

Mapped Sites Summary



Dataset	Distance	Elevation	Map ID	Facility Site Name	Facility Site Address	Details Page #
HW	0.08mi N	-1.21 ft	1	CALLE REO YEAPACHIC JUAREZ	5213 FLOWER DR, EL PASO 79905	19
RCRA	0.08mi N	-1.21 ft	1	TRANSPORTES UNION - CALLE REO YEAPACHIC JUAREZ	5213 FLOWER DR, EL PASO 79905	20

*Sites are sorted by database tier, dataset, and distance from the subject property.

End of Mapped Sites Summary

Dataset	Facility Site Name	Facility Site Address	Details Page #
ERNS		TX-375	23

End of Unmapped Sites Summary

HW - Hazardous Waste

Map ID: 1	Source: TCEQ
Register #: 41695	Banks ID: 41695
CALLE REO YEAPACHIC JUAREZ	Rel. Loc.: 0.08mi N
5213 FLOWER DR, EL PASO, 79905	Elevation: 3694.23 ft (-1.21 ft)
Location Description:	5213 Flower, El Paso, TX
Tceq Permit:	
Facility Type:	Transporter
Status:	INACTIVE
Company Name:	TRANSPORTES UNION
Contact Name:	MARIO OLVERA
Contact Phone:	915-5439734
Tceq Facility Id:	18080
Last Ammend:	2011-10-03
Last Nor Update:	2011-10-17
Notification Date:	1990-09-14

Sites in Map ID 1 Cluster

Dataset	Facility Site Name	Facility Site Address	Page #
HW	CALLE REO YEAPACHIC JUAREZ	5213 FLOWER DR, EL PASO 79905	19
RCRA	TRANSPORTES UNION - CALLE REO YEAPACHIC JUAREZ	5213 FLOWER DR, EL PASO 79905	20

End of HW Section

RCRA - RCRA

Map ID: 1

Source: EPA

EPA Handler ID: TXR000079277

RCRA - RCRA

Banks ID: TXR000079277

TRANSPORTES UNION - CALLE REO YEAPACHIC JUAREZ

Rel. Loc.: 0.08mi N

5213 FLOWER DR, EL PASO, 79905

Elevation: 3694.23 ft (-1.21 ft)

Active Site Indicator:	Inactive
Activity Location:	TX
Non Notifier:	Not a non-notifier
Receive Date:	2011-10-17
Accessibility:	Not provided
Region:	06
State:	TX
Generator Status Universe:	N
Mailing Address:	5213 FLOWER DR
Mailing City:	EL PASO
Mailing State:	TX
Mailing Zip Code:	79905
Contact Name:	MARIO OLVERA
Contact Address:	5213 FLOWER DR
Contact City:	EL PASO
Contact State:	TX
Contact Zip:	79905
Contact Title:	ENVIRONMENTAL MANAGER
Owner Name:	TRANSPORTES UNION
Operator Name:	TRANSPORTES UNION - CALLE REO YEAPACHIC
Operator Type:	Private
Operator Seq Num:	2
Naics Description:	GENERAL FREIGHT TRUCKING, LOCAL
Importer Activity:	N
Transporter Activity:	N
Transfer Facility:	N
Recycler Activity:	N
Onsite Burner Exemption:	N
Furnace Exemption:	N
Underground Injection Activity:	N
Receives Waste From Offsite:	N
Universal Waste:	N
Universal Waste Dest Facility:	N
Used Oil Universe:	NNNNNNN
Federal Universal Waste:	N
Federal Indicator:	---
Hsm:	N
Gpra Permit Baseline:	Not on the Baseline
Gpra Renewals Baseline:	Not on the Baseline
Permit Renewal Workload:	-----
Permit Workload Universe:	-----
Permit Progress Universe:	-----

Map ID 1: RCRA - 5213 FLOWER DR



Post Closure Workload Universe:	-----
Closure Workload Universe:	-----
Under Discretionary Auth Universe:	N
Environmental Control Indicator:	N
Institutional Control Indicator:	N
Human Exposure Indicator:	N
Groundwater Controls Indicator:	N
Full Enforcement Universe:	-----
Snc Universe:	N
Unaddressed Snc:	N
Addressed Snc:	N
Snc With Compliance Sched:	N
Financial Assurance Required:	-----
Handler Date Of Last Change:	2012-10-18

Enforcements

Id Number:	TXR000079277
Activity Location:	TX
Enforcement Identifier:	1
Enforcement Type:	HQ120
Enforcement Desc:	WRITTEN INFORMAL
Enforcement Agency:	S
Enforcement Action Date:	10/03/2011
Pmp Amount:	
Fmp Amount:	
Fsc Amount:	
Scr Amount:	

Evaluations

Id Number:	TXR000079277
Activity Location:	TX
Evaluation Identifier:	1
Evaluation Type:	CEI
Evaluation Desc:	COMPLIANCE EVALUATION INSPECTION
Evaluation Agency:	State
Evaluation Start Date:	09/28/2011
Found Violation:	Y

Violations

Id Number:	TXR000079277
Activity Location:	TX
Violation Type:	XXS
Violation Type Desc:	State Statutory or Regulatory requirements that are broader-in-scope than the federal RCRA requirements
Viol Determined By Agency:	S
Date Violation Determined:	09/28/2011
Actual Rtc Date:	10/03/2011
Scheduled Compliance Date:	

Sites in Map ID 1 Cluster

Dataset	Facility Site Name	Facility Site Address	Page #
HW	CALLE REO YEAPACHIC JUAREZ	5213 FLOWER DR, EL PASO 79905	19
RCRA	TRANSPORTES UNION - CALLE REO YEAPACHIC JUAREZ	5213 FLOWER DR, EL PASO 79905	20

End of RCRA Section**End of Mapped Sites Details Section**

Unmapped Site: ERNS (1257981)



Source: EPA/National Response Center

Unmapped Site

ERNS - Emergency Response Notification System

NRC Report #: 1257981

Banks ID: 1257981

TX-375, EL PASO, TX

Incident Date Time:	9/12/2019 6:20
Responsible Company:	UNITED PETROLEUM TRANSPORTS
Source:	TELEPHONE

ERNS Details

Additional Info:	
Additional Medium Info:	
Any Fatalities:	Y
Description Of Incident:	CALLER REPORTING A TRACTOR TRAILER TANKER ON FIRE, RELEASING APPROXIMATELY 8000 GALLONS OF ETHANOL ON THE ROADWAY. THE INCIDENT IS STILL ON GOING, THE CAUSE IS UNKNOWN, INVESTIGATION IS UNDERWAY. LOCAL FIRE AND POLICE ON LOCATION, CONTRACTOR ENROUTE FOR CLEAN UP. ROADWAY IS CLOSED IN BOTH DIRECTIONS. CALLER REPORTING ONE FATALITY AT TIME OF INCIDENT.
Desc Remedial Action:	CLEAN UP CREW ENROUTE, INVESTIGATION UNDERWAY
Incident Cause:	TRANSPORT ACCIDENT
Incident Date Time:	9/12/2019 6:20
Incident Location:	
Medium Desc:	LAND
Number Fatalities:	1.0
Pipeline Type:	
Railroad Name:	
Responsible Company:	UNITED PETROLEUM TRANSPORTS
Seqnos:	1257981
Source:	TELEPHONE
Type Of Incident:	MOBILE

Materials Involved

Name Of Material:	ETHYL ALCOHOL
Seqnos:	1257981

End of Unmapped Sites Details Section

Dataset Descriptions and Sources

Dataset	Source	Dataset Description	Update Schedule	Requested Date	Received Date	Update Date	Source Update Date
RCRA COR - RCRA - Corrective Actions (FED)	EPA	These sites are registered hazardous waste generators or handlers that fall under the Resource Conservation and Recovery Act (RCRA) and subject to corrective action activity.	Quarterly	2024-01-18	2024-01-18	2024-01-24	2024-01-16
RCRA TSD - RCRA - Treatment, Storage, Disposal (FED)	EPA	This database lists all treatment, storage and disposal of hazardous material sites that fall under the Resource Conservation and Recovery Act (RCRA). All hazardous waste TSD facilities are required to notify EPA of their existence.	Quarterly	2024-01-18	2024-01-18	2024-01-24	2024-01-16
RCRA - RCRA (FED)	EPA	This database lists all sites that fall under the Resource Conservation and Recovery Act (RCRA) and are not classifiable as treatment, storage, disposers of hazardous material, hazardous waste generator or subject to corrective action activity.	Quarterly	2024-01-18	2024-01-18	2024-01-24	2024-01-16
CER NPL - CERCLIS - National Priority List (FED)	EPA	NPL is the list of high priority hazardous waste sites in the United States eligible for long-term remedial action financed under the federal Superfund program or SEMS database (formerly known as the CERCLIS database). The EPA will only add sites to the NPL list based upon completion of the Hazard Ranking System (HRS) screening, public solicitation of comments about the proposed site, and after all comments have been addressed.	Quarterly	2024-01-03	2024-01-03	2024-01-03	2023-12-26
CER - CERCLIS (FED)	EPA	The EPA maintains the SEMS database to track sites under the Comprehensive Environmental Response, Compensation, and Liability Act, a federal law designed to clean up abandoned hazardous waste sites. These sites are either proposed, listed or under review currently to be a part of the National Priority List.	Quarterly	2024-01-03	2024-01-03	2024-01-03	2023-12-26
CER NFRAP - CERCLIS - No Further Remedial Action Planned (FED)	EPA	From the Superfund Enterprise Management System (SEMS) database No Further Remedial Action Planned or NFRAP have been removed from the listing. NFRAP sites may be sites where, following an initial investigation, no contamination was found, contamination was removed quickly without the site being placed on the NPL, or the contamination was not serious enough to require Federal Superfund action or NPL consideration.	Quarterly	2024-01-03	2024-01-03	2024-01-03	2023-12-26
CER DNPL - CERCLIS - Delisted National Priority List (FED)	EPA	DNPL is a list of all sites that have been deleted from the EPA NPL list (SEMS database). These sites are taken off the NPL list usually due to no further response or remedial action being required on them. Notices to delete NPL sites are published in the Federal Register and become effective unless the EPA receives significant adverse or critical comments during the 30-day public comment period.	Quarterly	2024-01-03	2024-01-03	2024-01-03	2023-12-26
FED BF - Federal Brownfield (FED)	EPA	A listing of sites that assist the EPA in collecting, tracking, and updating information of sites in relation to the Small Business Liability Relief and Brownfields Revitalization Act. These sites are real property that is either abandoned or underutilized where redevelopment or expansion is complicated by real or perceived environmental contamination.	Quarterly	2024-01-15	2024-01-15	2024-01-24	2024-01-15

Dataset Descriptions and Sources

Dataset	Source	Dataset Description	Update Schedule	Requested Date	Received Date	Update Date	Source Update Date
RCRA VSG - RCRA - Very Small Quantity Generators (FED)	EPA	The EPA regulates all Hazardous Waste Generators subject to the Resource Conservation and Recovery Act (RCRA). They are classified by the quantity of hazardous waste generated. A Very Small Quantity Generator (VSG) generates less than 100 kg of waste per month.	Quarterly	2024-01-18	2024-01-18	2024-01-24	2024-01-16
RCRA SQG - RCRA - Small Quantity Generators (FED)	EPA	The EPA regulates all Hazardous Waste Generators subject to the Resource Conservation and Recovery Act (RCRA). They are classified by the quantity of hazardous waste generated. A Small Quantity Generator (SQG) generates between 100kg and 1,000 kg of waste per month.	Quarterly	2024-01-18	2024-01-18	2024-01-24	2024-01-16
FED IC - Federal Institutional Control (FED)	EPA	This is a listing of Brownfield Management System (BMS) sites that have had Institutional Controls (ICs) placed on them. ICs are administrative restrictions, such as legal controls, that help minimize the potential for human exposure to known contamination by ensuring appropriate land or resource use. ICs are meant to supplement Engineering Controls and will rarely be the sole remedy at a site. ICs are a type of Activity and Use Limitation (AUL).	Quarterly	2024-01-15	2024-01-15	2024-01-24	2024-01-15
FED EC - Federal Engineering Control (FED)	EPA	This is a listing of Brownfield Management System (BMS) sites that have had Engineering Controls (ECs) placed on them. ECs are physical methods or modifications put into place on a site to reduce or eliminate the possibility of human exposure to known contamination. ECs are a type of Activity and Use Limitation (AUL).	Quarterly	2024-01-15	2024-01-15	2024-01-24	2024-01-15
ERNS - Emergency Response Notification System (FED)	EPA/National Response Center	ERNS is a national database used to store information on unauthorized releases of oil and hazardous substances that have been reported to the National Response Center since 2001. The NRC is the sole federal point of contact for reporting oil and chemical spills. Prior to 2001 this information was maintained by the EPA.	Annually	2024-01-24	2024-01-24	2024-01-29	2024-01-24
RCRA LQG - RCRA - Large Quantity Generators (FED)	EPA	The EPA regulates all Hazardous Waste Generators subject to the Resource Conservation and Recovery Act (RCRA). They are classified by the quantity of hazardous waste generated. A Large Quantity Generator (LQG) generates over 1,000 kg of waste per month.	Quarterly	2024-01-18	2024-01-18	2024-01-24	2024-01-16
ST PL - State National Priority List (TX)	TCEQ	This database contains sites determined by the TCEQ that may constitute an imminent and substantial endangerment to public health and safety or to the environment due to a release or threatened release of hazardous substances into the environment.	Quarterly	2023-07-10	2023-07-10	2024-01-23	2023-07-10
LPST - Leaking Petroleum Storage Tank (TX)	TCEQ	This database contains information on leaking storage tanks, equipment failures, compliance, and releases in the state.	Quarterly	2023-06-09	2023-03-01	2024-01-25	2023-03-01
VCP - Voluntary Cleanup Program (TX)	TCEQ	This database contains sites from the Voluntary Cleanup Program (VCP). The VCP records contain information on contaminated sites that private parties have cleaned up through assistance from the State in the form of administrative, technical, and legal incentives.	Quarterly	2023-07-10	2023-07-12	2024-01-23	2023-07-12

Dataset Descriptions and Sources

Dataset	Source	Dataset Description	Update Schedule	Requested Date	Received Date	Update Date	Source Update Date
VCP - Voluntary Cleanup Program (TX)	TCEQ	This database contains sites from the Innocent Operator Program (IOP). The IOP records are sites that have received certificates from the State acknowledging that their property is contaminated as a result of a release or migration of contaminants from a source or sources not located on the property, and they did not cause or contribute to the source or sources of contamination.	Quarterly	2023-07-10	2023-07-12	2024-01-23	2023-07-12
VCP - Voluntary Cleanup Program (TX)	RRC	The Railroad Commission of Texas Voluntary Cleanup Program provides an incentive to remediate Oil & Gas related pollution by participants as long as they did not cause or contribute to the contamination.	Quarterly	2023-05-04	2023-05-09	2024-01-25	2023-05-09
BF - State Brownfield (TX)	RRC	The Railroad Commission of Texas' Voluntary Cleanup Program (RRC-VCP) provides an incentive to remediate Oil & Gas related pollution by participants as long as they did not cause or contribute to the contamination. Applicants to the program receive a release of liability to the state in exchange for a successful cleanup.	Quarterly	2023-05-04	2023-05-09	2024-01-25	2023-05-09
BF - State Brownfield (TX)	TCEQ	Brownfield sites are former industrial properties that lie dormant or underutilized due to liability associated with real or perceived contamination. In Texas, the TCEQ, in close partnership with the EPA and other federal, state, and local redevelopment agencies, and stakeholders, is facilitating cleanup, transferability, and revitalization of Brownfield's through the development of regulatory, tax, and technical assistance tools.	Quarterly	2023-05-04	2023-05-04	2024-01-23	2023-05-04
SW - Solid Waste (TX)	TCEQ	The SWLF database contains records of municipal solid waste facilities that may accept various types of municipal solid waste for processing or disposal, depending on the type of facility. A Municipal Solid Waste facility may also accept certain special wastes and non-hazardous industrial solid wastes if approved by the TCEQ executive director.	Quarterly	2023-05-04	2023-05-04	2024-01-23	2023-04-28
SW - Solid Waste (TX)	TCEQ	This database is a listing of closed and abandoned municipal solid waste landfills. The sites included are either unauthorized (UNUM_) or permitted (PERMAPP_).	Historical	2011-03-06	2011-03-06	2011-03-06	2011-03-06
VCP - Voluntary Cleanup Program (TX)	RRC	The Operator Cleanup Program (OCP) under the Site Remediation Section is tasked with oversight of complex pollution cleanups performed by the oil and gas industry. Complex sites include those that occur in sensitive environmental areas as defined by 16 TAC3.91 (SWR 91) and may require site specific cleanup levels based on risk.	Quarterly	2023-08-02	2023-08-02	2024-02-12	2023-08-02
VCP - Voluntary Cleanup Program (TX)	TCEQ	The Texas Groundwater Protection Committee (TGPC) Joint Groundwater Monitoring and Contamination Report, SFR-56 lists all active and inactive groundwater contamination cases in the state and their enforcement status	Quarterly	2023-08-14	2023-08-14	2024-02-12	2023-08-14
LPST - Leaking Petroleum Storage Tank (TR6)	EPA	The Tribal LUST database (maintained by EPA Region 6) provides information on leaking underground storage tank on tribal lands in Louisiana, Arkansas, Oklahoma, New Mexico and Tribal Nations.	Quarterly	2024-02-01	2024-02-01	2024-02-02	2024-10-25

Dataset Descriptions and Sources

Dataset	Source	Dataset Description	Update Schedule	Requested Date	Received Date	Update Date	Source Update Date
MSD - Municipal Setting Designation (TX)	TCEQ	TCEQ defines a Municipal Settings Designation (MSD) as an official state designation given to a property within a municipality or its extraterritorial jurisdiction that certifies that designated groundwater at the property is not used as potable water, and is prohibited from future use as potable water because that groundwater is contaminated in excess of the applicable potable-water protective concentration level. The prohibition must be in the form of a city ordinance, or a restrictive covenant that is enforceable by the city and filed in the property records.	Quarterly	2023-06-09	2023-06-12	2024-01-23	2023-06-12
PST - Petroleum Storage Tank (TR6)	EPA	The Tribal UST database (maintained by EPA Region 6) provides underground storage tank information on tribal lands in Louisiana, Arkansas, Oklahoma, New Mexico and Tribal Nations.	Quarterly	2024-02-01	2024-02-01	2024-02-02	2024-10-24
DRYC - Dry Cleaner (TX)	TCEQ	Dry Cleaner data houses both the DCRP Program information and PERC information released by the TCEQ. The DCRP database contains records funded for state-lead clean up of dry cleaner related contaminated sites. The DCRP administers the Dry Cleaning Facility Release Fund to assist with remediation of contamination caused by dry cleaning solvents. There are two listings from this program: LIST#1 - A historic listing of any facility that registered with the DCRP indicating whether or not the facility has used Perchloroethylene (PERC) in the past. LIST#2 - A Prioritization list of dry cleaner sites Facilities on this list will be investigated in order to determine the existence and or extent of possible contamination. Facilities which are not current on their DCRP payments get dropped from the program.	Quarterly	2023-06-09	2023-06-09	2024-01-23	2022-09-01
HW - Hazardous Waste (TX)	TCEQ	This database contains information on facilities which store, process, or dispose of hazardous waste as maintained by the Industrial and Hazardous Waste Permits section of the TCEQ.	Quarterly	2023-05-04	2023-05-04	2024-01-23	2023-04-11
IC - State Institutional Control (TX)	RRC	The Railroad Commission of Texas Voluntary Cleanup Program provides an incentive to remediate Oil & Gas related pollution by participants as long as they did not cause or contribute to the contamination.	Quarterly	2023-05-04	2023-05-09	2024-01-25	2023-05-09
EC - State Engineering Control (TX)	TCEQ	This database includes Voluntary Cleanup Program (VCP) or Innocent Operator Program (IOP) sites that have been remediated and have had Engineering Controls (ECs) placed on them. ECs are physical methods or modifications put into place on a site to reduce or eliminate the possibility of human exposure to known contamination.	Quarterly	2023-07-10	2023-07-12	2024-01-23	2023-07-12
HW - Hazardous Waste (TX)	TCEQ	The mission of the TCEQ's industrial and hazardous waste (IHW) corrective action program is to oversee the cleanup of sites contaminated from industrial and municipal hazardous and industrial nonhazardous wastes.	Quarterly	2023-07-10	2023-04-06	2024-01-23	2023-03-31
HW - Hazardous Waste (TX)	TCEQ	This dataset lists various court orders affecting a site, including Notices of Enforcement and Administrative Orders.	Quarterly	2023-08-11	2023-08-11	2024-02-12	2023-07-15
PST - Petroleum Storage Tank (TX)	TCEQ	This database contains information on above and underground storage tanks, compliance, and releases in the state.	Quarterly	2024-01-02	2024-01-02	2024-01-23	2023-12-07

Dataset Descriptions and Sources



Dataset	Source	Dataset Description	Update Schedule	Requested Date	Received Date	Update Date	Source Update Date
IC - State Institutional Control (TX)	TCEQ	This database includes Voluntary Cleanup Program (VCP) or Innocent Operator Program (IOP) sites that have been remediated and have had Institutional Controls (ICs) placed on them. ICs are administrative restrictions, such as legal controls, that help minimize the potential for human exposure to known contamination by ensuring appropriate land or resource use.	Quarterly	2023-07-10	2023-07-12	2024-01-23	2023-07-12

Disclaimer



The Banks Environmental Data Regulatory Database Report was prepared based upon data obtained from State, Tribal, and Federal sources known to Banks Environmental Data at the time the data was obtained. Great care has been taken by Banks in obtaining the best available data from the best available sources. However, there is a possibility that there are sources of data applicable or pertaining to this report's target property, and/or surrounding properties, to which Banks does not have access or has not accessed. Furthermore, although Banks Environmental Data performs quality assurance and quality control on all data, including data it obtains, Banks recognizes that inaccuracies in data from these sources may, and do, exist; accordingly, inaccurate data may have been used or relied upon in the preparation of this report. Even though Banks Environmental Data performs a thorough and diligent search to locate and fix any inaccuracies in the data relied upon in the preparation of this report, Banks cannot guarantee or warrant the accuracy of the locations, information, data, or report. The purchaser of this report accepts this report "as is" and assumes all risk related to any potential inaccuracy contained in the report or not reported in it, whether due to a reliance by Banks Environmental Data on inaccurate data, or for any other reason [including but not limited to the negligence or express negligence of Banks Environmental Data]. If this report is being used for the Records Review section of a Phase I Site Assessment according to the ASTM 1527-21, for EPA's All Appropriate Inquiry, or for any other purpose (public or private), all liability and responsibility is assumed by the Environmental Professional or other individual or entity acquiring the report.

B-7 – Public Review

List of Potential Public Review POCS for Clardy Fox Project

Public review of the Draft Environmental Assessment (DEA) was held from December 15, 2024 until January 15, 2025. The DEA was made available electronically at the Albuquerque District website and paper copies of the DEA were available for review at the Clardy Fox Library (5515 Robert Alva Ave, El Paso, TX 79905) and the Tech2O Center (10751 Montana Ave, El Paso, TX 79936). Letters inviting comment were sent to the agencies and entities listed below. The U.S. International Boundary and Waters Commission and the Texas Parks and Wildlife acknowledged receipt of the DEA but had no comments on the proposed project.

Federal Agencies

Federal Emergency Management Agency

Larry Voice, Senior Engineer, Mitigation Division, FEMA Region 6
larry.voice@fema.dhs.gov
Office: (940) 898-5419 Mobile: (940) 435-9078

International Boundary and Water Commission, U.S. Section (USIBWC)

Dr. Gilbert Anaya
gilbert.anaya@ibwc.gov
4191 N. Mesa, El Paso, TX 79902
915-832-4710

US Fish and Wildlife Service –Texas Coastal Ecological Services Field Office

Ms. Dawn Gardiner, Field Supervisor, U.S. Fish and Wildlife Service
dawn_gardiner@fws.gov
Texas Coastal ES Field Office, Alamo sub-office
3325 Green Jay Road
Alamo, Texas 78516

USEPA Region 6

Mr. Robert Houston, Staff Director
Houston.Robert@epa.gov
Communities, Tribes and Environmental Assessment
Office of the Regional Administrator, U.S. EPA Region 6
1201 Elm Street, Suite 500
Dallas, Texas 75270-2102

State

Texas Commission on Environmental Quality (TCEQ)

Kent Waggoner, Regional Director, Region 6, El Paso
kent.waggoner@tceq.texas.gov
(512) 239-3500
401 E. Franklin Ave, Ste 560
El Paso TX 79901-1212
Main Line: 915-834-4949

Texas Department of Transportation

Tomas Trevino, P.E., District Engineer, El Paso
Tomas.trevino@txdot.gov
915-790-4204
13301 Gateway West, El Paso, TX 79928
cc: Antonio Santana District Hydraulics Engineer Antonio.Santana@txdot.gov

Texas Parks and Wildlife Department

Jessica Schmerler, Ecological and Environmental Planning Program

Jessica.Schmerler@tpwd.texas.gov

Lois Balin, Urban Wildlife Biologist

lois.balin@tpwd.texas.gov

Local**City of El Paso Floodplain Administrator**

Kareem Dallo, P.E., CFM, CNU-A

Engineering Division Manager & Floodplain Administrator

dallokf@elpasotexas.gov

(915) 212-1560

County Commissioner Precinct 2

David Stout

915-546-2111

Commissioner2@epcounty.com

District 2 City Representative

Josh Acevedo

915-212-0002

District2@elpasotexas.gov

Nearest Library

Clardy Fox Library

5515 Robert Alva Ave., El Paso, TX 79905

915-212-0456

Neighborhood Associations

Washington- Delta Neighborhood Association

Ms. Cynthia Renteria 915-637-3026

Mr. Brian Lopez 915-996-3778

AFFIDAVIT OF PUBLICATION

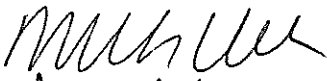
Gretchen Byram
El Paso Water Utilities
1154 Hawkins Blvd
El Paso TX 79925

STATE OF WISCONSIN, COUNTY OF BROWN

The El Paso Times, a newspaper published in the city of El Paso,
El Paso County, State of Texas, and personal knowledge of the
facts herein state and that the notice hereto annexed was
Published in said newspapers in the issue:

12/15/2024

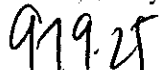
and that the fees charged are legal.
Sworn to and subscribed before on 12/15/2024



Legal Clerk



Notary, State of WI, County of Brown



My commission expires

Publication Cost: \$401.94

Tax Amount: \$0.00

Payment Cost: \$401.94

Order No: 10846066

Customer No: 1350326

PO #:

of Copies:

1

THIS IS NOT AN INVOICE!

Please do not use this form for payment remittance.

VICKY FELTY
Notary Public
State of Wisconsin

Notice of Availability
Draft Environmental
Assessment, Clardy Fox
Pump Station, El Paso,
Texas

The U.S. Army Corps of Engineers (Corps), Albuquerque District and El Paso Water Utilities (EPWater) have completed a Draft Environmental Assessment (DEA) entitled "Clardy Fox Pump Station, El Paso, Texas". The Corps, in cooperation with and at the request of EPWater, is planning to improve the stormwater pumping capacity of the pump station to reduce the potential for flooding within the Clardy Fox community along Cesar E. Chavez Highway on the southern city limits. The proposed work would include the construction of a new back-up generator platform, new transformer and electric control room, rerouting of electrical components, and installation of three larger water pumps. These improvements would more than double the pumping capacity of the existing facility during period of significant rainfall so stormwater can more efficiently be discharged into the Rio Grande and out of the local housing community. The duration of the proposed construction would be nine months and is expected to start in the fall of 2025.

The DEA is electronically available for viewing and downloading at the Albuquerque District website (under "FONSI/ Environmental Assessments") at: <https://www.sap.usace.army.mil/missions/EnvironmentalAssessments/EnvironmentalAssessments-FONSI/>. A hard copy will be sent upon request.

The draft EA and FONSI will be available for public review from Dec. 15, 2024 until Jan. 15, 2025. Written comments may be emailed to USACEProjectsElPasoTexas@usace.army.mil or sent by postal mail to:

U.S. Army Corps of Engineers
Albuquerque District
Environmental Resources
Section
Attn: CESPA-PM-LE (Ms. Dana Price)

Albuquerque, New Mexico
87109-3435

Paper copies of the DEA are also available for review at: Clardy Fox Library, 5515 Robert Alvo Ave., El Paso, TX 79905

Tech20 Center, 10751 Montana Ave., El Paso, TX 79936

For more information, please contact Ms. Dana Price, USACE, (505) 342-3378 or USACEProjectsElPasoTexas@usace.army.mil
December 15, 2024 10846066

Classifieds



To Advertise, visit our website: **Classifieds.elpasotimes.com**
■ Public Notices/Legals email: **Legals@elpasotimes.com**
■ Business & Services email: **Servicedirectory@elpasotimes.com**
■ To post job openings, visit: **Elpasotimes.com/jobs**

TO ADVERTISE
Visit Our Website:
Classifieds.elpasotimes.com

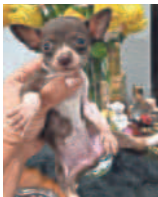
All classified ads are subject to the applicable rate card, copies of which are available from our Advertising Dept. All ads are subject to approval before publication. The El Paso Times reserves the right to edit, refuse, reject, classify or cancel any ad at any time. Errors must be reported in the first day of publication. The El Paso Times shall not be liable for any loss or expense that results from an error in or omission of an advertisement. No refunds for early cancellation of order.

Adopt Me Pets

all your favorites...

Domestic Pets

Goldendoodles Sweet loving pups. M/F chocolate & apricot. Raised indoors with family & kids. Both parents have amazing temperaments. Non shedding. Suzanne 575-635-8766



Chihuahuas TCup Chihuahuas 10 wks old shots must see 500.00 915-299-5009



Poodle Christmas puppies purebred toy poodles 12 weeks healthy 1st shots 2 males one female parents on premises Contact 650-296-1680



Rehoming Maltipooh Puppies 11wks old shots dewormed house broken non shed 915-299-5009

Rottweiler Purebred pups (no papers) \$200.00 tails cropped/1st shots Parents on premises. (915) 694-0539



Maltipooh Toys Maltipoohs 11 wks old shots de wormed 700 Hypoallergenic Non Shed Pups Socialized 915-288-1222 915-288-1222

Lost - Pets



We need your help to find our beloved dog, Coco, a black Miniature Schnauzer. She was last seen in the Cielo Vista area, near Hawkins and Viscount. Her family is heartbroken and desperate to bring her home. If you have any information, please reach out—a reward is being offered, with no questions asked. Contact Information: Fernando Ramirez 915-234-4154

Garage sales Market

neighborly deals...

Garage Sales



El Paso, Saturday, December 14, 2025. 7 AM to 1 PM., 1400 Elm Street, **BIG YARD SALE. MANY LAMPS, FOOTSTOOLS, SMALL TABLES, CHRISTMAS STUFF, GLASSWARE, CLOCK RADIO, TOILET, etc.**

Estate Sales

WESTSIDE

1513 Cidra Del Sol

Redd to Parque Del Sol to Altar Del Sol to Crucero Del Sol to Cidra Del Sol Dec. 14th & 15th 2024
Saturday 9-2, Sunday 10-2

Nice Furniture, Jewelry & Some Coins
Details and Pics at: facebook.com/charlottesestatesales

CHARLOTTE'S ESTATE SALES
(915) 539-8532

Email: charlottesestatesales@gmail.com
- MEMBER CAGA -

El Paso, TX., Dec.14/15 Sat.8-2, Sun.9-2, 7024 Cerro Negro Dr., Dining table, curio cabinet, bookshelves, 1920s banjo, books, vinyl records, yard decor, weights and dumbbells, office supplies, board games, leather sofa, recliner, refrigerator, kitchenware,jewelry, womans clothing and shoes, blankets, dresser, nightstand, patio swing, outdoor patio and umbrella, and much more.

Northeast, Dec 14th and Dec 15th 10-2, 3736 DeVore Ct., Furniture, welding tanks, oriental paintings, jigsaw puzzles, mail box, household items, comforters and misc. 10-1,000.00.

Careers

Jobs

new beginnings...

Engineering-IT

Mechanical Design Engineer

ImTechnology LLC is seeking a Mechanical Design Engineer in El Paso, Texas. Requires: Bachelor's degree in any engineering major, plus 36 months of experience as Mechanical Design Engineer. Must have knowledge and proficiency in the following software: Solidworks, Autocad, Mastercam, CPK's, 8D's, FMEA, Poka Yoke, and KANBAN. Qualified applicants may submit resume directly to Jasor Burboa, Human Resources, via email to Hr@imtechnology.us. (915)219-9469

Careers

Jobs

new beginnings...

Engineering-IT

Eaton Corporation – El Paso, TX – Senior Power Systems Engineer –
Provide applied engineering and technical consultation for customers in the areas of power systems studies, power quality analysis, installation, startup, maintenance, repair, and training. 15% domestic travel for business meetings, trainings, and field engineering work. Position is fixed location based in El Paso office; however, telecommuting from a home office may also be allowed. To apply: Send resumes to <https://career41.sapsf.com/sfcareer/jobreacareerpvt?jobid=34989&company=eatoncorpo&st=2AA1D9AEB2F2994F930D029A3F97707497AF3B0E>.

Professional

Athletic Trainer, Clint I.S.D., El Paso, TX.

Req. min. Bach's deg. in Athletic Training, Kinesiology, or rel. field. Must poss. Athletic Training License from TX Advisory Board of Athletic Trainers and TX Educator's Certificate. Req. travel to away games within 300 mile radius and within Texas with varsity football team during football season. Please apply at <https://www.applitrack.com/clintweb/> onlineapp/. No agencies or phone calls please.

ASSISTANT PROJECT MANAGER

West Texas construction company is filling the position of Assistant Project Manager. This position requires handling multiple projects and assisting the project managers and analysts to ensure projects are completed on time and to specifications. The Assistant Project Manager will set up and coordinate project execution with project superintendents, establish, update, and communicate the Master Project Schedule and manage its execution, work with the preconstruction/estimating team in project constructability review meetings, support to generate and manage budget, maintain accurate financial reporting, interpret, and analyze reports to ensure adherence to project budget. A degree in civil engineering, construction management or architecture, and five years of experience is required, as well as the Construction Quality Management for Contractors (CQM) certification, OSHA 30 Training, and working knowledge of ICRA standards: Infection Control Risk Assessment and ILSM standards: Interim Life Safety Measurements. Qualified applicants only. Please send applications to cpopoca@velizconstruction.com.

Careers

Jobs

new beginnings...

Professional

Becton, Dickinson and Company seeks a Manufacturing Technical Leader in El Paso, TX
to be responsible for Loss (Breakdown, Waste, Speed), Investigation and Resolution. Req. BS +2 yrs exp. To apply, mail resume to: (BD), Attn: BDHR – DT, 3750 Torrey View Ct., San Diego, CA 92130, or submit a resume to <https://www.workintexas.com/vosnet/Default.aspx>, or submit a resume to https://bdx.wd1.myworkdayjobs.com/EXTERNAL_CAR_EER_SITE_USA. Must reference Job Title & Job Code: R-506107. EOE.

Real Estate

Rentals

PUBLISHER'S NOTICE

All real estate advertised herein is subject to the Federal Fair Housing Act, which makes it illegal to advertise any preference, limitation, or discrimination because of race, color, religion, sex, handicap, familial status, or national origin, or intention to make any such preference, limitation, or discrimination. "We will not knowingly accept any advertising for real estate which is in violation of the law. All persons are hereby informed that all dwellings advertised are available on an equal opportunity basis.



Single Family Rentals

3 BD, 2 BA, 2 CAR, \$1500
3251 Solarridge Las Cruces
2 BD, 2BA, 1 CAR, \$750
2016 Lisa Drive, Deming
4 BD, 1BA, \$ 990
613 Sixth, Alamogordo
480-392-8550

Your Source

Public Notices

for the latest...

Bids & Proposals

UMC 1st Floor Humidity Control Improvements

The El Paso County Hospital District d/b/a University Medical Center of El Paso is requesting sealed proposals for the following: UMC 1st Floor Humidity Control Improvements
On December 9, 2024 RFP packets may be downloaded from the University Medical Center Procurement Portal, <https://umcelpaso.bonfirehub.com/portal>, also can be found on our web page <https://www.umcelpaso.org/d-a-business-with-umc>. A mandatory pre-submittal meeting is scheduled on December 18, 2024 at 2:00 PM MT in the Engineering Conference Room. Last day to submit questions for this RFP is January 7, 2025 until 2:00 PM MT
Responses must be received by UMC El Paso Purchasing Department no later than January 27, 2025 until 2:00 PM MT. Please follow instructions on RFP document regarding instructions on delivery of proposals. University Medical Center of El Paso reserves the right to accept or reject any or all responses.
All questions regarding this RFP may be directed to: bids@umcelpaso.org or through Procurement Portal. 10829655 Dec. 8, 15, 2024

Public Notices

Notice of Availability Draft Environmental Assessment, Clardy Fox Pump Station, El Paso, Texas

The U.S. Army Corps of Engineers (Corps), Albuquerque District and El Paso Water Utilities (EPWater) have completed a Draft Environmental Assessment (DEA) entitled "Clardy Fox Pump Station, El Paso, Texas". The Corps, in cooperation with and at the request of EPWater, is planning to improve the stormwater pumping capacity of the pump station to reduce the potential for flooding within the Clardy Fox community along Cesar E. Chavez Highway on the southern city limits. The proposed work would include the construction of a new back-up generator platform, new transformer and electric control room, rerouting of electrical components, and installation of three larger water pumps. These improvements would more than double the pumping capacity of the existing facility during period of significant rainfall so stormwater can more efficiently be discharged into the Rio Grande and out of the local housing community. The duration of the proposed construction would be nine months and is expected to start in the fall of 2025.

The DEA is electronically available for viewing and downloading at the Albuquerque District website (under "FONSI/ Environmental Assessments") at: <https://www.spa.usace.army.mil/Missions/Environment/Environmental-Compliance-Documents/Environment>

Public Notices

Mesilla Valley Public Housing Authority: Executive Director Vacancy

Mesilla Valley Public Housing Authority (MVPHA) is seeking a qualified and dynamic individual to serve as its Executive Director. This key leadership position is responsible for overseeing the day-to-day operations, property management, public housing and voucher program administration, financial, compliance, and community relations for the housing authority. The Executive Director reports to the five-member board of commissioners appointed by the City of Las Cruces and Dona Ana County Board of County Commissioners.

MVPHA owns, operates, and manages a portfolio of approximately 1,000 units and 1,700 vouchers. This consists of 248 public housing units, 40 Section 8 New Construction units, 681 tax credit/non-subsidized units, and 1,666 HCV vouchers (including 80 VASH Vouchers). Overall, MVPHA serves approximately 6,000 low-income families and individuals in its area of operation. MVPHA has a budget of approximately \$11M and a staff of 30 employees. MVPHA is planning to "reposition" a significant component of its public housing units as part of redevelopment of its main campus area near downtown/Las Cruces.

Applicants must have a Bachelor's degree, with a degree in public administration, business administration, urban planning, or a related field preferred. Applicants should have at least five years of experience in the affordable and/or multifamily housing field, or a related field, such as public administration, with expertise in federal housing program administration preferred.

The position comes with a competitive salary in the anticipated range of \$115,000 to \$135,000, with benefits, commensurate with the candidate's experience.

Interested applicants must submit a cover letter, application, resume, and any additional information about themselves they believe is relevant for consideration to MVPHA through its outside counsel, Mendel Blumenfeld & Pulido, PLLC.

The deadline for the submission of applications is 5:00 p.m., Mountain Time, on Monday, January 13, 2024.

Applications and information about MVPHA may be obtained online at the following link: <https://www.dropbox.com/scl/fo/m5tjnoifyyncm24hwypiw3/AHKmQxMZrusV6URBrX4f3ew?rlkey=azgiugnmtaq3vhfgb16v4yxakx&st=awx7bg76&dl=0>

Applications must be submitted via email to Robert L. Blumenfeld, bbu@acaciapark.com. December 15 2024 LACO0206817

Business & Service Directory

to advertise, email: **Servicedirectory@elpasotimes.com**

Brick - Concrete

#1 REYES CONCRETE
Concrete Work, Rock Wall & Roofing Repairs.Painting,Landscaping. No Job Too Big or Small!! Free Estimates! Margarito (915) 252-5175 www.reyesconcretetx.com

ROCKWALL REPAIR CO.
593-8050

LOWER VALLEY CONCRETE
Concrete Contractors
915-779-0677
Ivc5428@sbcglobal.net

Clean Up and Removal

JUNK REMOVAL
Yard Clean-Up
Dog Waste Removal
915-887-7378

Electrical

Professional ELECTRICAL Work
FREE Estimates. Ruiz Electric
Call Rudy ★
915-474-9960
Licensed & Insured TECL28471

Home Improvement

#1 KITCHEN DLC
Custom Cabinets
Reface Existing Cabinets
Formica & Granite Counter Tops
915 241-3280

Lawn - Garden Care

Izzy's Yard & Tree Services!
Yard maintenance, Tree services & hauling. Free Est. 915-242-5064

Professional Service

EASY REAL ESTATE LOANS
\$20,000-\$500,000
★ 915-593-1995 ★
1590 Lomaland St F
NMLS335225 Equity RE
Ray Nabhan NMLS 334945

Electrical

Public Notices

al-Assessments-FONSI/. A hard copy will be sent upon request.

The draft EA and FONSI will be available for public review from Dec. 15, 2024 until Jan. 15, 2025. Written comments may be emailed to USACEProjectsEIPasoTexas@usace.army.mil or sent by postal mail to: U.S. Army Corps of Engineers

Albuquerque District Environmental Resources Section
Attn: CESPA-PM-LE (Ms. Dana Price)
Albuquerque, New Mexico 87109-3435

Paper copies of the DEA are also available for review at: Clardy Fox Library, 5515 Robert Alva Ave., El Paso, TX 79905
Tech20 Center, 10751 Montana Ave., El Paso, TX 79936

For more information, please contact Ms. Dana Price, USACE, (505) 342-3378 or USACEProjectsEIPasoTexas@usace.army.mil
December 15,2024 10846066

Find your new job HERE!



Public Notices

From: [Gilbert Anaya](#)
To: [Price, Dana M CIV USARMY CESPA \(USA\)](#)
Cc: [Frank Fisher](#)
Subject: [Non-DoD Source] RE: El Paso, TX Project Review: Draft EA for Clardy Fox Pump Station
Date: Monday, December 16, 2024 11:22:34 AM

Hi Dana,
Thank you for providing, we will review the EA and get back to you if needed.

Regards,
Gilbert

From: Price, Dana M CIV USARMY CESPA (USA) <dana.m.price@usace.army.mil>
Sent: Friday, December 13, 2024 1:12 PM
To: Gilbert Anaya <gilbert.anaya@ibwc.gov>
Cc: Frank Fisher <frank.fisher@ibwc.gov>
Subject: El Paso, TX Project Review: Draft EA for Clardy Fox Pump Station

Good afternoon, Dr. Anaya,

The U.S. Army Corps of Engineers, in collaboration with El Paso Water, is planning a project to improve the Clardy Fox Pump Station in southeast El Paso. A map and project description is provided in the attached letter. We have prepared a draft Environmental Assessment (EA) for public review, available on the Albuquerque District website at <https://www.spa.usace.army.mil/Missions/Environmental/Environmental-Compliance-Documents/Environmental-Assessments-FONSI/>.

The public review will extend from December 15, 2024, until **January 15, 2025**. Please reach out with any questions.

Thank you,
Dana

Dana M. Price (she/her)
Biologist
Environmental Resources Section
U.S. Army Corps of Engineers, Albuquerque District
Office: (505) 342-3378
Telework/Cell: (505) 417-9787

From: [Jessica Schmerler](#)
To: [Price, Dana M CIV USARMY CESPA \(USA\)](#)
Cc: [Lois Balin](#)
Subject: [Non-DoD Source] RE: El Paso, TX Project review: Draft EA for Clardy Fox Pump Station
Date: Wednesday, January 15, 2025 3:15:59 PM

Hi Dana,

The TPWD Ecological and Environmental Planning Program does not have any comments on the Draft EA for the proposed Clardy Fox Pump Station Project. Thank you for coordinating this project with our program.

I hope you are doing well!

Thanks,
Jessica

Jessica E. Schmerler, CWB
Environmental Review Biologist
Ecological & Environmental Planning Program
Texas Parks and Wildlife Department
(512) 389-8054

From: Price, Dana M CIV USARMY CESPA (USA) <dana.m.price@usace.army.mil>
Sent: Friday, December 13, 2024 12:42 PM
To: Lois Balin <Lois.Balin@tpwd.texas.gov>
Cc: WHAB <WHAB@tpwd.texas.gov>; Jessica Schmerler <Jessica.Schmerler@tpwd.texas.gov>
Subject: El Paso, TX Project review: Draft EA for Clardy Fox Pump Station

ALERT: This email came from an external source. Do not open attachments or click on links in unknown or unexpected emails.

Good afternoon, Lois,

I'm addressing this review request to you because I've worked with you on previous projects in the El Paso area. I'm also sending this to the Wildlife Habitat Assessment Program.

The U.S. Army Corps of Engineers, in collaboration with El Paso Water, is planning a project to improve the Clardy Fox Pump Station in southeast El Paso. A brief project description is provided in the attached letter. We have prepared a draft Environmental Assessment (EA) for public review, available on the Albuquerque District website at <https://www.spa.usace.army.mil/Missions/Environmental/Environmental-Compliance-Documents/Environmental-Assessments-FONSI/>.

The Corps has determined that no listed species or critical habitats would be affected by the proposed action. The comment period is from Dec. 15, 2024 to Jan. 15, 2025.

Please let me know if you have questions.

Thank you,

Dana

Dana M. Price (she/her)

Biologist

Environmental Resources Section

U.S. Army Corps of Engineers, Albuquerque District

Office: (505) 342-3378

Telework/Cell: (505) 417-9787

From: [Reyes, Ernesto](#)
To: [Price, Dana M CIV USARMY CESPA \(USA\)](#)
Cc: [delaGarza, Laura](#)
Subject: [Non-DoD Source] Clardy Fox Pump Station
Date: Wednesday, February 19, 2025 9:11:52 AM

Ms. Dana M. Price,

We received your December 17, 2024 letter regarding effects of a proposed pump station on federally listed species in El Paso County, Texas. This action also was evaluated for impacts to wetlands and other federal fish and wildlife trust resources.

The U.S. Army Corps of Engineers (Corps), Albuquerque District and El Paso Water Utilities (EP Water) have completed the Draft Environmental Assessment (DEA) entitled “Clardy Fox Pump Station, El Paso, Texas”. The Corps, in cooperation with and at the request of EP Water, is planning to improve the stormwater pumping capacity of the pump station to reduce the potential for flooding within the Clardy Fox community along Cesar E. Chavez Highway on the southern city limits bordering Mexico. The proposed work would include the construction of a new back-up generator platform, new electric control room, installation of three larger water pumps and a rerouting of electrical components to the new transformer location. These improvements would more than double the pumping capacity of the existing facility during periods of significant rainfall so water can more efficiently be discharged into the Rio Grande and out of the local housing community. The duration of the proposed construction would be nine months and is expected to start in the fall of 2025.

To avoid or minimize impacts to birds protected by the MBTA, the Service recommends conducting bird surveys no more than five days prior to ground disturbing activities or mechanical clearing of brush and trees between March 15 and September 15. Surveys should include searches for birds, nests, and eggs. The U.S. Fish and Wildlife Service (Service) recommends leaving a buffer of vegetation (≥ 100 feet (30.5 meters)) around songbird nests detected until young have fledged or the nest is abandoned. Other species such as water birds or raptors require larger buffer distances of 500 feet or more.

The Corps has determined that the project activity would have no effect on southwestern willow flycatcher (*Empidonax traillii extimus*), western yellow-billed cuckoo (*Coccyzus americanus occidentalis*), and Sneed's pincushion cactus (*Escobaria sneedii* var. *sneedii*). The Service does not provide concurrence for “no effect” determinations, but by making a determination, we believe the Corps has complied with Section 7(a)(2) of the Endangered Species Act of 1973, as amended.

Ernesto Reyes

Fish and Wildlife Biologist
U.S. Fish and Wildlife Service
Texas Coastal and Central Plains Ecological Service
Alamo Sub-Office

3325 Green Jay Rd
Alamo, Texas 78516
O - 956-307-5132
C - 361-533-6057

B-8 – Contacted Agencies



List of Contacted Agencies

Federal Agencies

Federal Emergency Management Agency

Larry Voice, Senior Engineer, Mitigation Division, FEMA Region 6
larry.voice@fema.dhs.gov
Office: (940) 898-5419 Mobile: (940) 435-9078

Federal Highway Administration

Thomas Beeman
thomas.beeman@dot.gov
Area Engineer, El Paso District (Abilene, El Paso, Lubbock, Odessa)
(512) 536-5967

International Boundary and Water Commission, U.S. Section (USIBWC)

Apurba Borah, Ph.D., P.E., PMP, CFM
Lead Hydraulic Engineer
apurba.borah@ibwc.gov

Dr. Gilbert Anaya
gilbert.anaya@ibwc.gov
4191 N. Mesa, El Paso, TX 79902
915-832-4710

United States Border Patrol

Kamal Otman
kamal.k.otman@cbp.dhs.gov
Program Manager, TI El Paso and Big Bend Sectors
US Border Patrol
DHS/CBP
Program Management Office Directorate
(202) 819-6074 Gov Cell
cc: gabriel.g.olivas@cbp.dhs.gov

US Fish and Wildlife Service –Texas Coastal Ecological Services Field Office

Ms. Dawn Gardiner, Field Supervisor, U.S. Fish and Wildlife Service
dawn_gardiner@fws.gov
Texas Coastal ES Field Office, Alamo sub-office
3325 Green Jay Road
Alamo, Texas 78516

USDA NRCS El Paso Service Center

Margaret Gannon, Urban Conservationist
Margaret.Gannon2@usda.gov
1190 Don Haskins Suite E2 El Paso, TX, 79936
Mobile Number: (915) 539-1497 Office Number: (915) 261-1443

USEPA Region 6

Mr. Robert Houston, Staff Director
Houston.Robert@epa.gov
Communities, Tribes and Environmental Assessment
Office of the Regional Administrator, U.S. EPA Region 6
1201 Elm Street, Suite 500
Dallas, Texas 75270-2102



State

Texas Commission on Environmental Quality (TCEQ)

Kent Waggoner, Regional Director, Region 6, El Paso
kent.waggoner@tceq.texas.gov
(512) 239-3500
401 E. Franklin Ave, Ste 560
El Paso TX 79901-1212
Main Line: 915-834-4949

Texas Department of Transportation

Tomas Trevino, P.E., District Engineer, El Paso
Tomas.trevino@txdot.gov
915-790-4204
13301 Gateway West, El Paso, TX 79928
cc: Antonio Santana District Hydraulics Engineer Antonio.Santana@txdot.gov

Texas Parks and Wildlife Department

Jessica Schmerler, Ecological and Environmental Planning Program
Jessica.Schmerler@tpwd.texas.gov

Lois Balin, Urban Wildlife Biologist
lois.balin@tpwd.texas.gov

Local

City of El Paso Floodplain Administrator

Kareem Dallo, P.E., CFM, CNU-A
Engineering Division Manager & Floodplain Administrator
dallokf@elpasotexas.gov
(915) 212-1560

County Commissioner Precinct 2

David Stout 915-546-2111 Commissioner2@epcounty.com

District 2 City Representative

Josh Acevedo 915-212-0002 District2@elpasotexas.gov

Nearest Library

Clardy Fox Library
5515 Robert Alva Ave., El Paso, TX 79905
915-212-0456

Neighborhood Associations

Washington- Delta Neighborhood Association
Ms. Cynthia Renteria 915-637-3026
Mr. Brian Lopez 915-996-3778

Open Space Advisory Board (OSAB)

Kevin Smith
smithkw@elpasotexas.gov
Planning and Inspections
915-212-1566
300 N. Campbell
El Paso, Texas 79901



List of Contacted Tribes by ESSCO

- **APACHE TRIBE OF OKLAHOMA**

P.O. Box 1330
Anadarko, OK 73005

Mr. Bobby Komardley
Chairman
bkomardley@outlook.com

Mr. Sterling Chalepah
Environmental Gap Technician
sterling.chalepah@apachetribe.org

- **COMANCHE NATION**

P.O. Box 908
Lawton, OK 73502

Ms. Martina Minthorn
Tribal Historic Preservation Officer
martina.minthorn@comanchenation.com

Mr. Mark Woommavovah
Chairman
jennifer.rodriguez@comanchenation.com

- **FORT SILL APACHE**

43187 US Highway 281
Apache, OK 73006-8038

Ms. Lori Gooday Ware
Chairwoman
lori.g.ware@fortsillapache-nsn.gov

Mr. Michael Darrow
Tribal Historian
michael.darrow@fortsillapache-nsn.gov

- **KIOWA TRIBE**

Post Office Box 369
Carnegie, Oklahoma 73015

Chairman Lawrence SpottedBird
lspottedbird@kiowatribe.org

Amanda Hill
Tribal Historic Preservation Officer
ahill@kiowatribe.org
thpo@kiowatribe.org



- **MESCALERO APACHE TRIBE**

Post Office Box 227
Mescalero, NM 88340

Ms. Holly Houghten
Tribal Historic Preservation Officer
Mescalero Apache Tribe

- **TONKAWA**

1 Rush Buffalo Road
Tonkawa, OK 74653

Ms. Lauren Norman-Brown
Tribal Historic Preservation Officer
lbrown@tonkawatribe.com

Mr. Russell Martin
President
rmartin@tonkawatribe.com

- **WHITE MOUNTAIN APACHE TRIBE**

Post Office Box 507
Fort Apache, AZ 85926

Mr. Mark Altaha
Tribal Historic Preservation Officer
MarkAltaha@wmat.us

- **WICHITA AND AFFILIATED TRIBES (WICHITA, KEECHI, WACO & TAWAKONIE)**

P.O. Box 729
Anadarko, OK 73005

Ms. Terri Parton
President
Terri.Parton@wichitatribe.com

- **YSLETA DEL SUR PUEBLO - TIGUA**

119 South Old Pueblo Drive
El Paso, TX 79907

Mr. Evaristo Cruz
Environmental Manager
ecruz@ydsp-nsn.gov